

Sussex County Family Courthouse

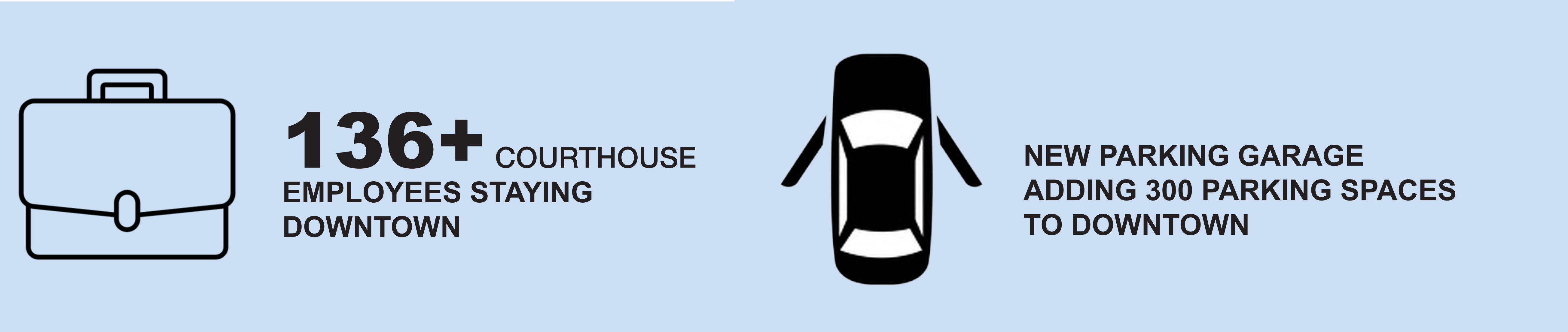
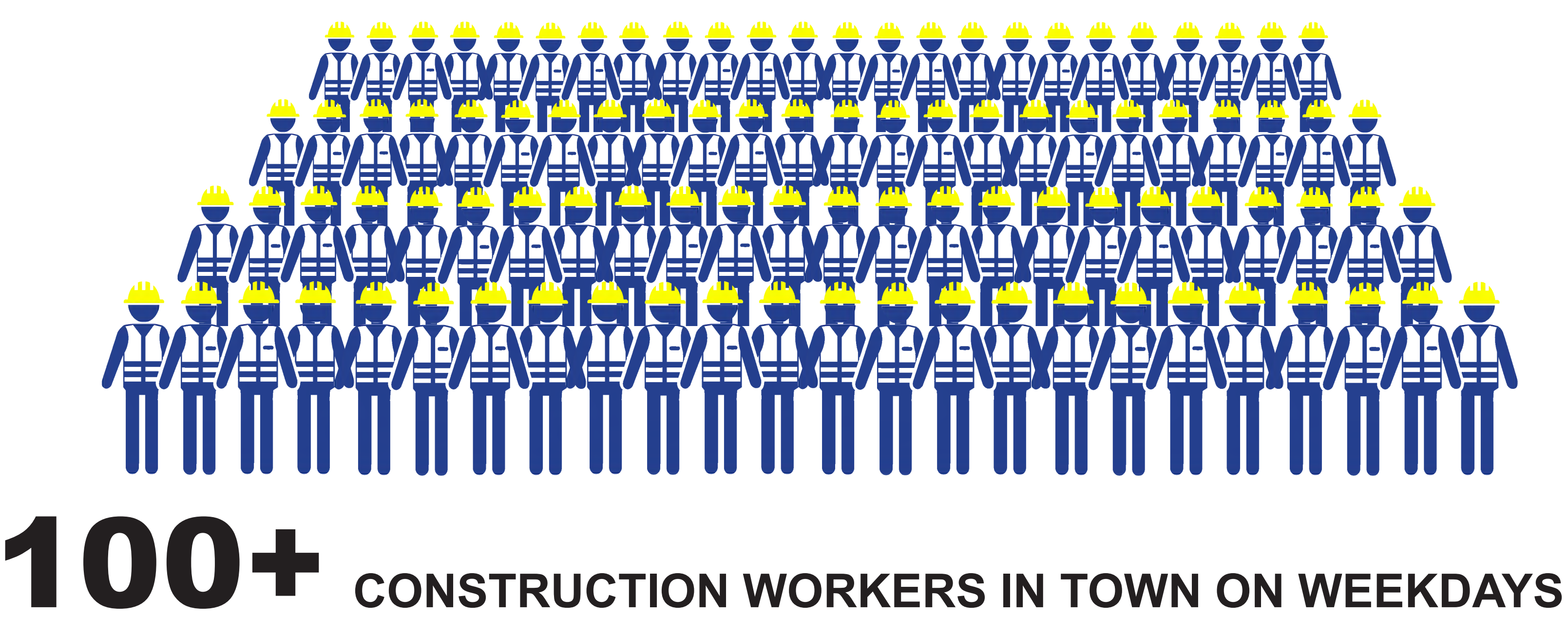
An Economic Contributor Today & Tomorrow



CONSTRUCTION COST

\$105 MILLION

INCLUDES MATERIALS, LABOR, ETC.



ADDITIONAL BENEFITS:

INCREASE IN:

SAFETY

- SEPARATION OF CIRCULATION PATHS
- APPROPRIATE SIZING OF COURTROOMS
- SPACE FOR SAFETY PROCEDURES
- CLEAR LINES OF SIGHT

DIGNITY

- WELCOMING DESIGN WITH NATURAL DAYLIGHT
- POSITIVE ENVIRONMENT FOR VICTIMS AND CHILDREN

PRIVACY

- SPACE TO CREATE DISTANCE
- SPACE FOR PRIVACY AND CONFIDENTIALITY

ACCESS TO SERVICES & RESOURCES

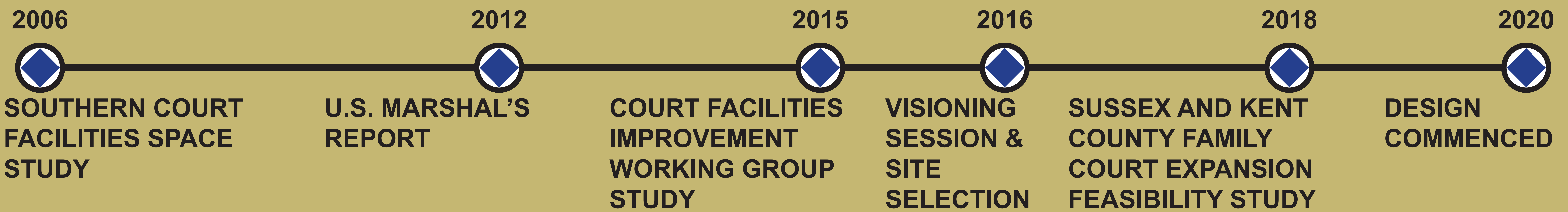
- PARTNER AGENCIES
- LAW LIBRARY
- SELF-HELP CENTER

CAMPUS CIRCULATION

- ACCESSIBLE PARKING GARAGE ADJACENT TO COURTHOUSE
- DIGNIFIED ENTRANCE WITH SPACIOUS LOBBY AND QUEUING AREA
- INFORMATION DESK AND PARTNER AGENCIES ON FIRST FLOOR
- EFFICIENT COURTROOM LAYOUT WITH LARGE WAITING AREAS

Sussex County Family Courthouse

Project History



Design Reasoning

Why is the building so much larger than the existing Family Court building?

The study in 2006 and the U.S. Marshal's Report in 2012 expressed security concerns due to the lack of separate paths of circulation for public, judges, and detainees. The new building introduces these separate paths of circulation, as well as courtrooms sized for dignity, security, and current courtroom standards. Additionally, this courthouse includes offices for associated agencies to provide easily reached access and meet the needs of the community.

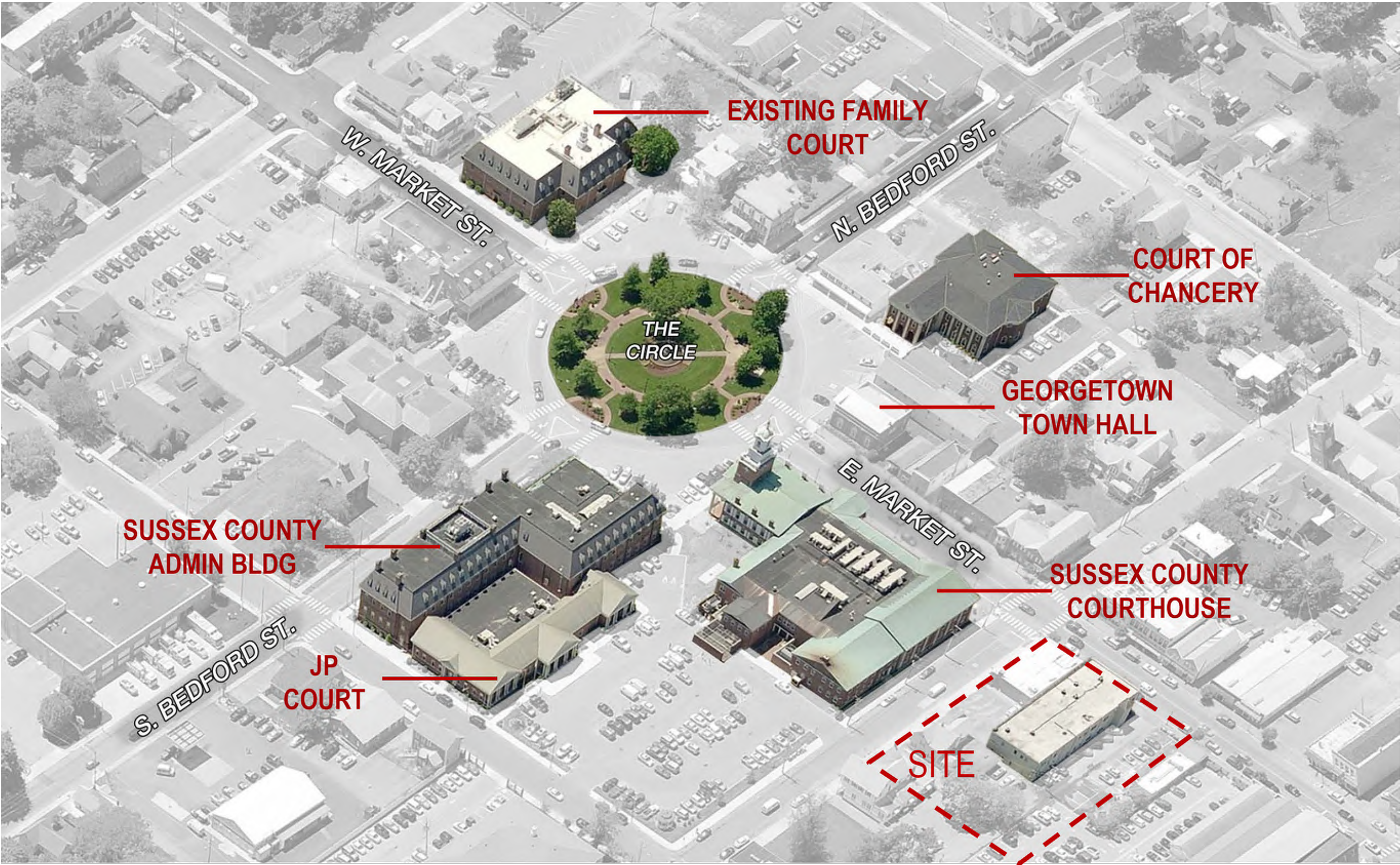
What style is this courthouse?

This courthouse is a transitional building that harkens back to the neighboring historic buildings with the use of character, proportions, and materials. The first floor one-story-high area has human-scale windows, and the second and third floors on Market and Race Streets have two-story-high box windows with windows and mullions that reflect the scale of the neighboring buildings.

Why is there so much glass on the building?

The family courthouse and parking garage will be constructed of red clay brick, cast stone, and precast concrete and glazing. The design team introduced glass in strategic areas both to provide natural light inside the building and to provide lines of sight from inside and outside. Creating good lines of sight at the lobby help with security and create a warm and welcoming atmosphere where individuals may be apprehensive. The courtroom waiting areas at the second and third floor corridors along Race Street will have an abundance of daylight to create a safe and secure area for litigants to wait in separate areas.

SUSSEX COUNTY FAMILY COURTHOUSE



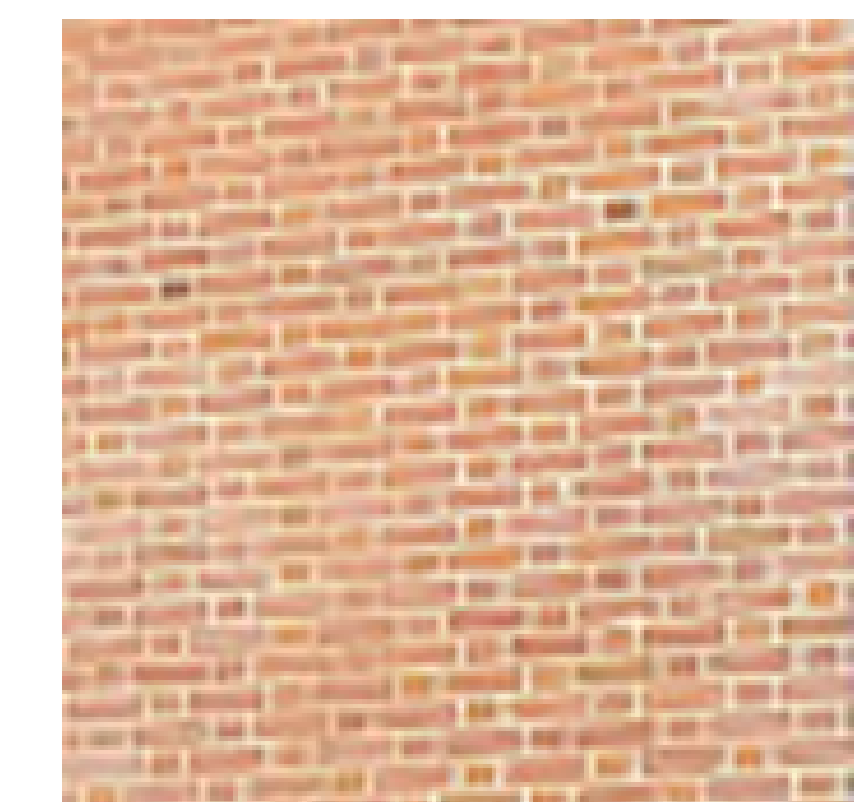
GOALS

- REVITALIZE DOWNTOWN GEORGETOWN & MARKET STREET
- CENTRALIZE COURT SERVICES AND RESOURCES
- EASY ACCESS TO JUSTICE
- PROVIDE FULL SERVICES FOR THE COMMUNITY
- SAFE AND SECURE COURTHOUSE



“Designing new construction on a historic site or in a historic setting that it is compatible but differentiated from the historic building or buildings”.

THE SECRETARY OF THE INTERIOR'S STANDARDS
FOR THE TREATMENT OF HISTORIC PROPERTIES

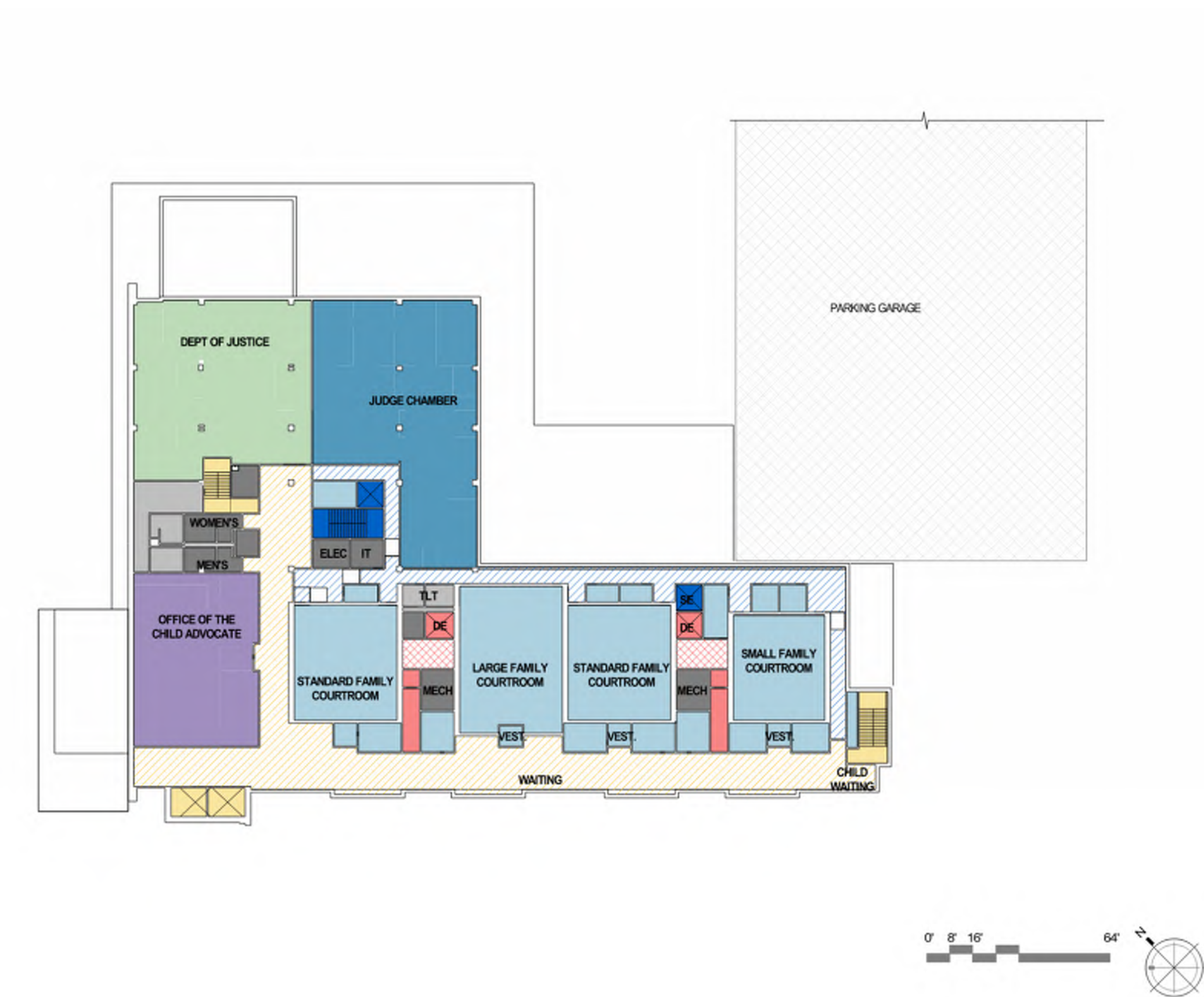




AERIAL VIEW - FROM THE CIRCLE



AERIAL VIEW - FROM RACE STREET



LEVEL 3



LEVEL 2



LEVEL 1



PROPOSED DESIGN - VIEW FROM INTERSECTION OF MARKET STREET AND RACE STREET



LOBBY ENTRY PROPOSED DESIGN

- Cantilevered canopy shortened and reduced in length
- More elaborate stepped profile with shadow added to canopy edges
- Large vertical white posts added to glazing
- Additional vertical white mullions added to glazing
- Horizontal white mullions made more prominent
- Round columns increased in size and have additional reveals / joints



TOWER CUPOLA PROPOSED DESIGN

- More elaborate stepped profile with shadow added to canopy edges
- Larger vertical white posts added to glazing
- Additional vertical and horizontal white mullions added to glazing
- Horizontal white mullions made more prominent



PROPOSED DESIGN - MARKET STREET VIEW



VIEW OF PLAZA AND LOBBY ON MARKET STREET



**MARKET STREET BAY WINDOW
PROPOSED DESIGN**

- Additional vertical white mullions added to glazing at punched windows
- Additional horizontal white mullions added to glazing between projecting facades



**MARKET STREET LOBBY WALL
PROPOSED DESIGN**

- Additional window openings to break up lobby wall
- (Note: The large tree behind the lobby is not shown for clarity)



VIEW ON RACE STREET FROM PINE STREET



**RACE STREET BAY WINDOW
PROPOSED DESIGN**

- Additional vertical white mullions added to glazing at punched windows
- Additional horizontal white mullions added to glazing between projecting facades

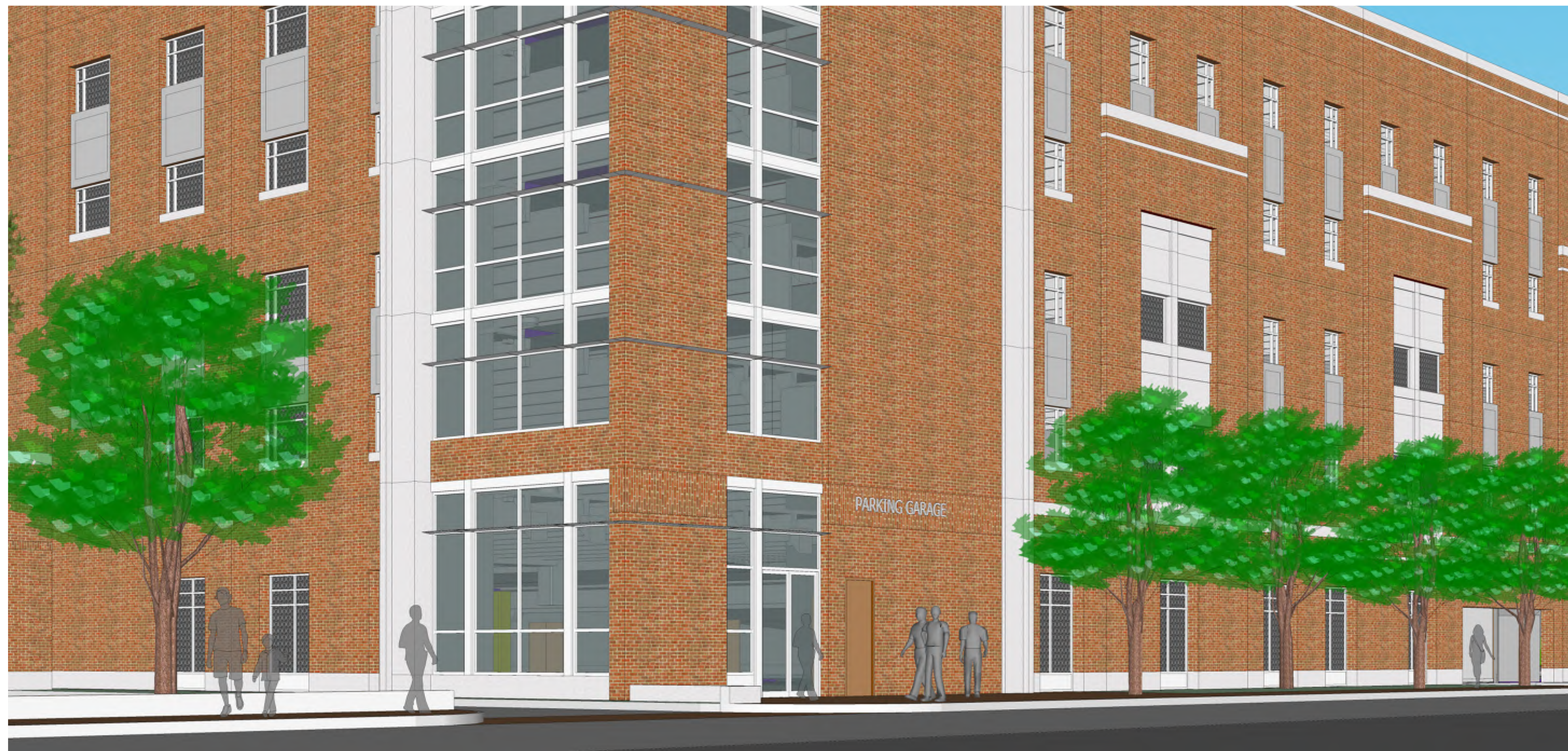


TOWER CUPOLA PROPOSED DESIGN

- Window openings with large and small mullions added to top of cupola south elevation
- Recessed vertical element added to tower wall to break up mass



VIEW OF PARKING GARAGE FROM PINE STREET AND RACE STREET



PARKING GARAGE ENTRANCE AND ELEVATION VIEW



VIEW FROM PINE STREET



KENT COUNTY COURTHOUSE, DOVER, DELAWARE



FRANKLIN COUNTY COURTHOUSE, MASSACHUSETTS



SUPERIOR COURT, BRIDGEPORT, CONNECTICUT



DELAWARE COUNTY COURTHOUSE, DELAWARE, OHIO



RENFREW COUNTY COURTHOUSE, CANADA

