

TOWN MANAGER'S WEEKLY REPORT



UPCOMING MEETINGS & EVENTS ...

- ✓ **Town Offices Closed:** Thursday, November 26, in observation of Thanksgiving Day
- ✓ **Town Offices Closed:** Friday, November 27, in observation of Day after Thanksgiving
- ✓ **Board of Adjustment:** Wednesday, December 2, 5:00 PM
- ✓ **Sussex County Association of Towns Steering Committee:** Friday, December 4, 9:00 AM, First State Community Action Agency
- ✓ **Town Council:** Wednesday, December 9, 6:45 PM Public Hearing, followed by Regular Meeting – Electronic Meeting
- ✓ **Delaware League of Local Governments:** Cancelled until further notice

UPDATES FROM DEPARTMENTS ...

Finance

- As of November 20, the Town has collected:
 - \$1,636,304 (98%) of the annual property tax billing (\$1,674,899)
 - \$948,648 (88%) of the October quarterly utility billing (\$1,082,646)
 - ✓ Collections still in alignment with prior quarters
- Processed Accounts Payable, Accounts Receivable, and Payroll
- Provided Tax and Utility Information for property settlements and stamped deeds
- Attended the Town of Georgetown Health Care Renewal Meeting

Wastewater

- Lagoon depths: Large Lagoon is 12.50 feet and Small Lagoon is 8.00 feet
- Recorded 4" of rain for Thursday's rain event at the plant
- Replaced impeller on Pump 1 at Big Park pumping station
- Hauled 5 loads out of Sandhill pumping station with the pump truck
- Responded to sewer issue on West Market Street, ran sewer-jetter through clean out and cleared the problem

Police

- Weekly and Year to Date crime statistics (selected crimes) updated (copy attached)
- Proposal from CentralSquare under revision (adding CrimeMapping™ to our website)
- Departmental Press Releases issued as warranted

TOWN MANAGER'S WEEKLY REPORT



Planning

- Projects:
 - Marvel Museum phasing plan has been approved and building permit was issued on November 18
 - PAM Rehabilitation lot subdivision received approval from the engineer, pending signatures
 - PAM Rehabilitation site plan has been resubmitted on November 16
 - Revelation Brewing phasing plan received approval and final site plans signed on November 20
- Admirals Landing will be the new name for the Smith Farm townhouse project on Vaughn Road
- Business license renewals are scheduled to be mailed the week of November 23

Construction Coordinator

- Georgetown East Gateway project:
 - Reviewed and approved RFI #9 & #10
 - Reviewed and approved plan change for force main around new roundabout layout
 - Reviewed and approved plans for proposed ditch that crosses our water main in two areas
 - Inspection of 10" water main and steel casing installation
- Certificate of Occupancy:
 - 6 College park Lane Suite 11
- Business Securities, LLC:
 - Water main pressure test approved.
- Miss Utility Locate Summary (copy attached)

Public Works

- Cleared and purged irrigation systems
- Set up Christmas tree in The Circle
- Replaced street signs in Carriage Place Development

TOWN MANAGER'S WEEKLY REPORT



TOWN MANAGER'S UPDATE ...

- Attended ribbon cutting for Sol Azteca (see photo) (Gene Dvornick, Steve Hartstein, Rebecca Johnson-Dennis, Angela Townsend, Bill West)
- Provided utility easement corrections to counsel drafting same
- Addressed concerns and questions with Sandhill Fields Operations Manager
- Researched zoning for lands used for cemeteries
- Followed up on project status and permits for business relocation
- Held 2021 Health Care Renewal Meeting. (Hobie Brewington, Kristen Dabrowski, Gene Dvornick, Laura Givens, Jocelyn Godwin, Mike Goins, Olga Holm, Kenny Wilson)
Highlights are as follows:
 - ✓ Premiums anticipated to remain flat
 - ✓ No anticipated change in employee contribution
 - ✓ Encouraging a wellness program
 - ✓ Adding Behavioral Health coverage
 - ✓ Investigating post-employment health care reimbursement account
- Comprehensive Plan status:
 - ✓ Remains on track
 - ✓ Requested information has been supplied
 - ✓ Discussion with Planning Commission anticipated at December Meeting
- Worked with Chamber of Commerce on pole decoration alternatives (attachment to light poles)
- Met with local municipality to discuss challenges, answer questions, share information, and offer assistance as needed (Kristen Dabrowski, Gene Dvornick, Laura Givens)
- Researched and starting drafting of a Livestreaming Policy
- Responded to safety concerns over Topsy Turvy Covid Parade
- Monthly Labor Review – October 2020 received (copy attached)
- Followed up on several code enforcement issues

TOWN MANAGER'S WEEKLY REPORT



- ✓ wear a mask
- ✓ keep your distance
- ✓ keep it small
- ✓ virtual get-togethers
- ✓ send a side dish
- ~~holiday travel~~

GIVE THANKS.

NOT COVID-19.

This Thanksgiving, remember that COVID-19 doesn't take a holiday. So keep your loved ones safe by finding creative ways to connect. Stay healthy. Stay thankful. And celebrate with only those in your household this year.

For ideas on how to give thanks safely, visit de.gov/coronavirus.

 **DELAWARE HEALTH AND SOCIAL SERVICES**
Division of Public Health

TOWN MANAGER'S WEEKLY REPORT



RYAN MAVITY PHOTO



TOWN MANAGER'S WEEKLY REPORT



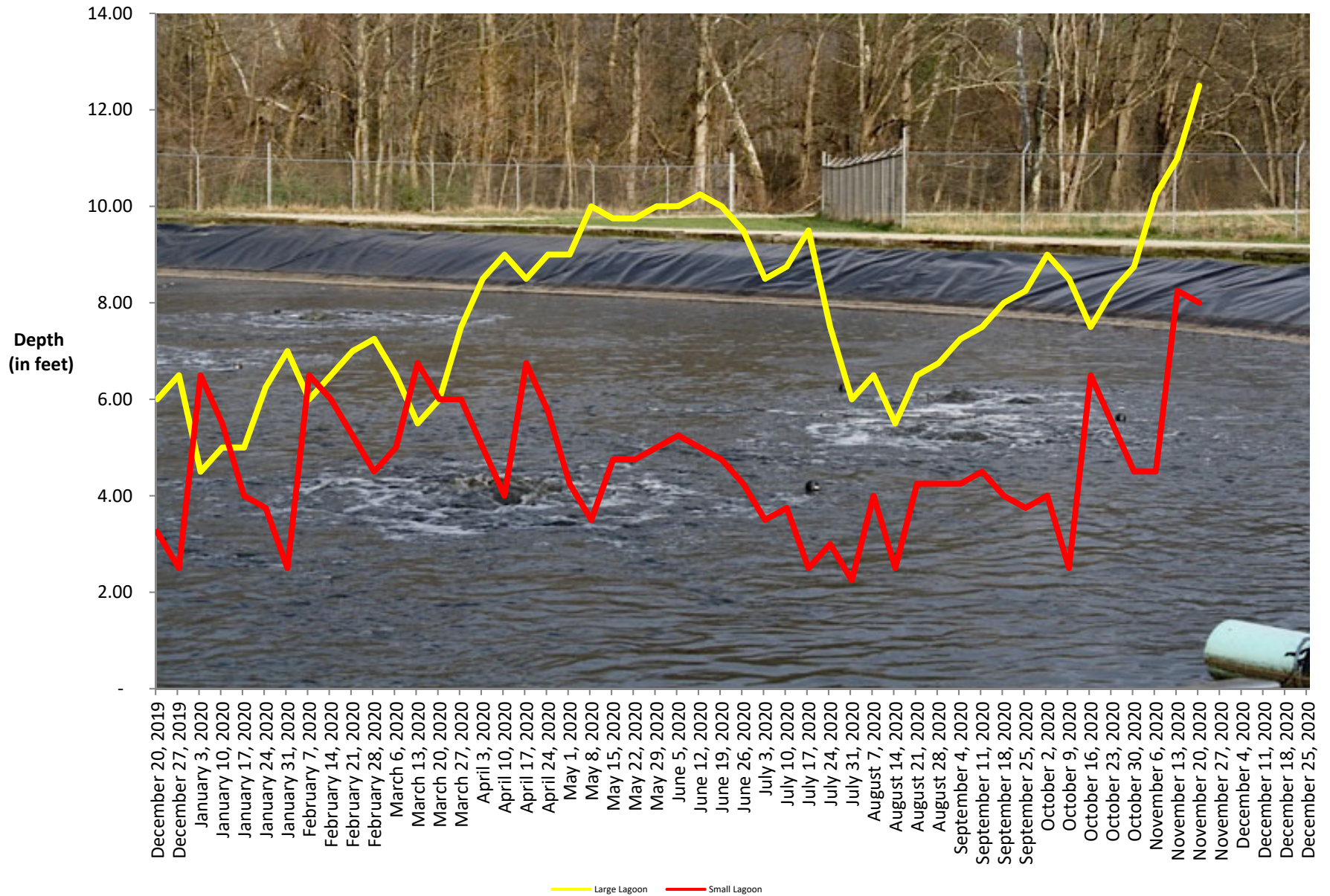
TOWN MANAGER'S WEEKLY REPORT



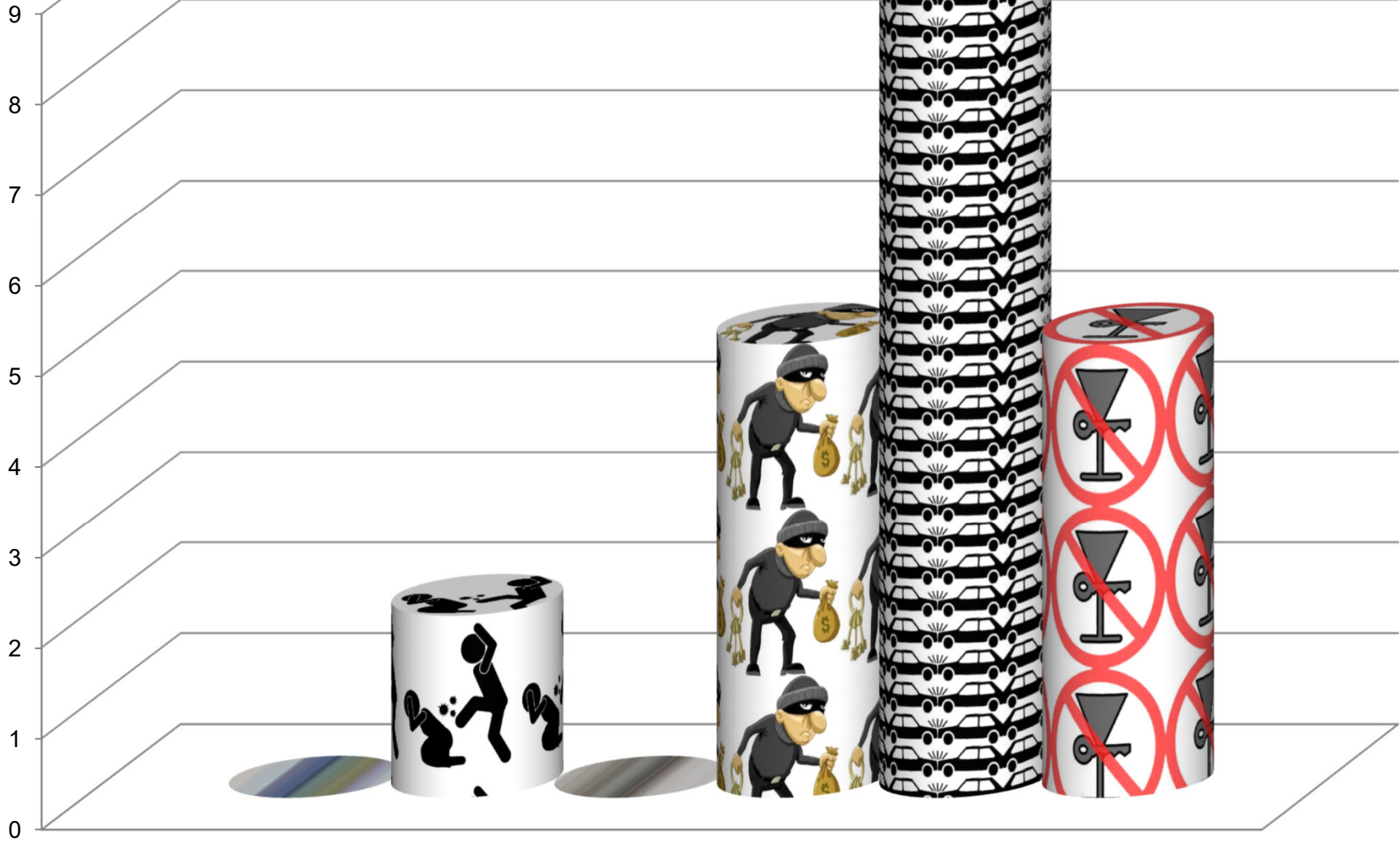
***THIS REPORT AND ANY ATTACHMENTS ARE ONLY BEING SENT
ELECTRONICALLY UNLESS OTHERWISE REQUESTED***

In an effort to better inform Council, employees and the public about current Town activities and issues, the Town Manager issues the Town Manager's Weekly Report with highlights from department activities for the current week. The report is published online and distributed every Friday. If you have comments, questions or suggestions regarding the Town Manager's Weekly Report, please contact Town Manager.

WWTF Lagoon Depths



November 18, 2020

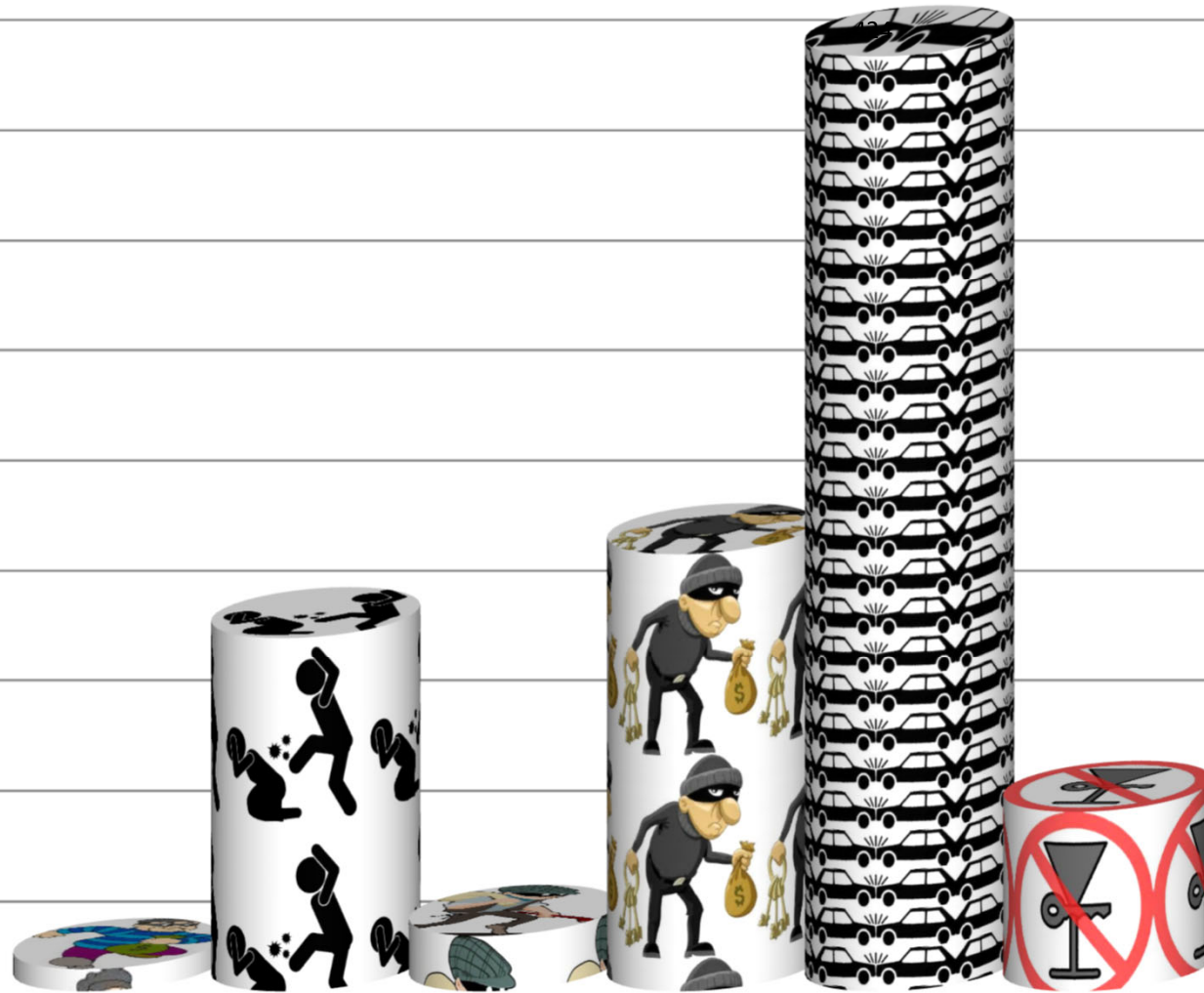


Weekly

*Robbery *Assault *Buglary *Thefts *Collision *DUI

November 18, 2020

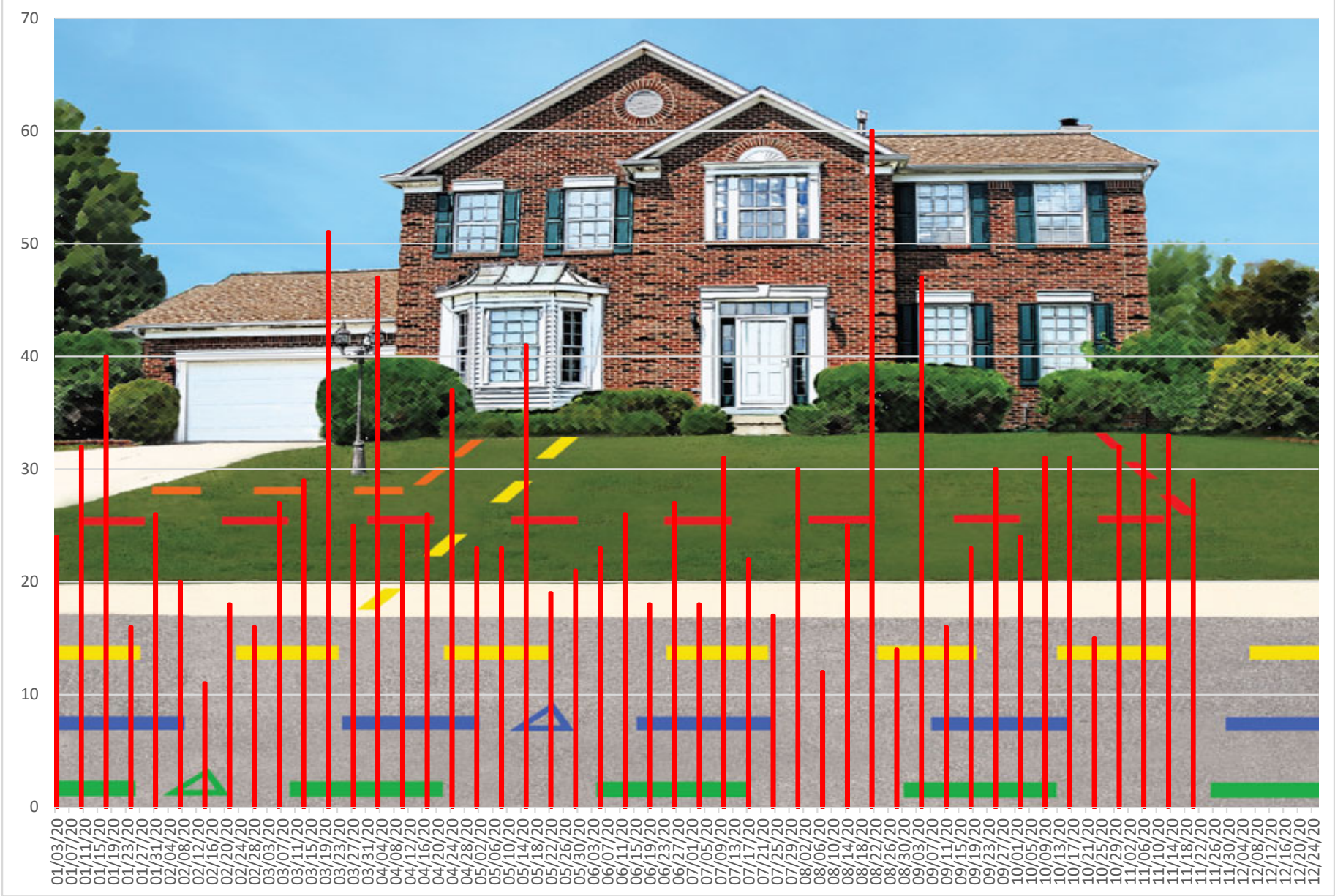
450
400
350
300
250
200
150
100
50
0



Year to Date

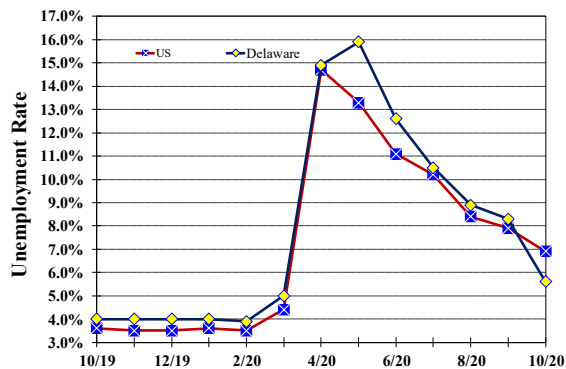
*Robbery *Assault *Buglary *Thefts *Collision *DUI

Miss Utility Locate Tickets



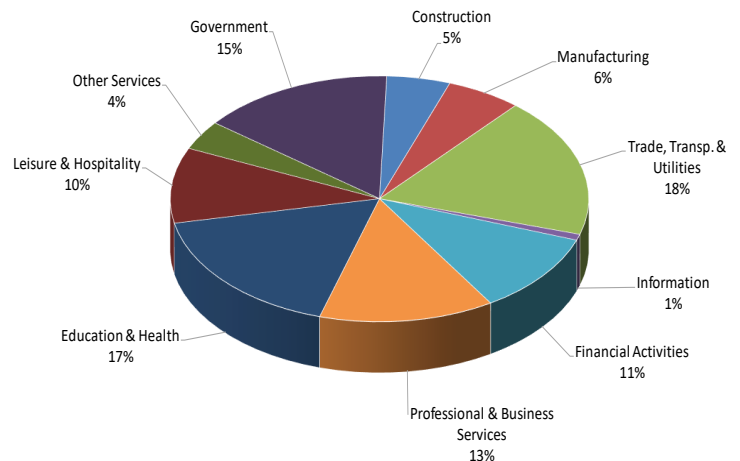
Unemployment Rate

Delaware and US
October 2019 - October 2020



Percent Distribution of Delaware Nonfarm Employment

October 2020



Delaware Civilian Labor Force

Delaware Residents

	Oct. 2020	Sept. 2020	Oct. 2019
Civilian Labor Force	479,100	487,800	489,000
Employed	452,100	447,100	469,500
Unemployed	27,000	40,700	19,500
Unemployment Rate %	5.6	8.3	4.0
US Unemployment Rate %	6.9	7.9	3.6

Source: Delaware Dept. of Labor in cooperation with the US Dept. of Labor, Bureau of Labor Statistics.

Area Unemployment Rates (%)

	Oct. 2020	Sept. 2020	Oct. 2019
New Castle County	5.7	8.7	3.8
Wilmington	10.5	14.2	5.7
Newark	4.1	6.3	3.9
Kent County	5.9	8.8	4.2
Dover	8.7	12.4	5.7
Sussex County	4.6	7.0	3.6

Note: Area rates are not seasonally adjusted.

Source: Delaware Dept. of Labor in cooperation with the US Dept. of Labor, Bureau of Labor Statistics.

Hours & Earnings

All Employee (Total Private)

	Oct. 2020	Sept. 2020	Oct. 2019
Weekly Earnings	\$945.43	\$928.20	\$897.60
Weekly Hours	32.4	32.5	33.0
Hourly Earnings	\$29.18	\$28.56	\$27.20

Delaware Labor Force Trends

Delaware's seasonally adjusted unemployment rate in October 2020 was 5.6%, down from 8.3% in September 2020. There were 27,000 unemployed Delawareans in October 2020 compared to 19,500 in October 2019. The US unemployment rate was 6.9% in October 2020, down from 7.9% in September 2020. In October 2019, the US unemployment rate was 3.6%, while Delaware's rate was 4.0%.

In October 2020, seasonally adjusted nonfarm employment was 430,100, up from 426,900 in September 2020. Since October 2019, Delaware's total nonfarm jobs have decreased by a net loss of 36,000, a decline of 7.7%. Nationally, jobs during that period declined 6%.

Delaware Nonfarm Employment

Jobs at Delaware Locations
Seasonally Adjusted (in 000s)

INDUSTRY GROUP	Oct. 2020	Sept. 2020	Over the Month Change	Over the Year Change†
TOTAL NONAG. EMP.	430.1	426.9	3.2	-36.0
CONSTRUCTION	21.1	21.4	-0.3	-1.6
MANUFACTURING	25.0	25.0	0.0	-2.2
Durable Goods	8.7	8.7	0.0	-1.1
Nondurable Goods	16.3	16.3	0.0	-1.1
TRADE, TRANSP., & UTIL.	79.2	77.4	1.8	-1.2
Wholesale Trade	10.4	10.0	0.4	-0.7
Retail Trade	52.4	51.9	0.5	0.2
Transp. & Utilities	16.4	15.5	0.9	-0.7
INFORMATION *	3.4	3.4	0.0	-0.5
FINANCIAL ACTIVITIES	45.7	46.0	-0.3	-1.9
PROF. & BUS. SERVICES	58.1	57.9	0.2	-5.6
EDUCATION & HEALTH	73.9	73.8	0.1	-7.2
LEISURE & HOSPITALITY	42.7	40.4	2.3	-10.1
OTHER SERVICES	16.6	16.3	0.3	-2.6
GOVERNMENT	64.4	65.3	-0.9	-3.1
Federal Government	6.1	6.6	-0.5	0.4
State Government	31.5	31.9	-0.4	-2.1
Local Government	26.8	26.8	0.0	-1.4

* Industries are not seasonally adjusted.

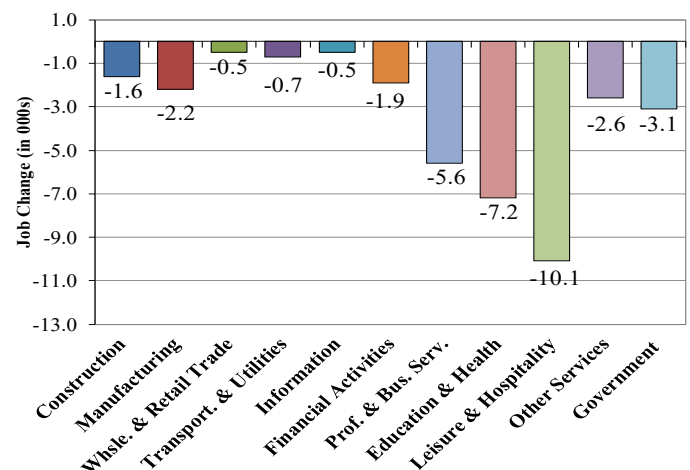
† Annual changes are not seasonally adjusted.

Details may not add up due to rounding and seasonal adjustment.

Source: US Department of Labor, Bureau of Labor Statistics.

Delaware Over-the-Year Job Change

October 2019—October 2020



Consumer Price Index

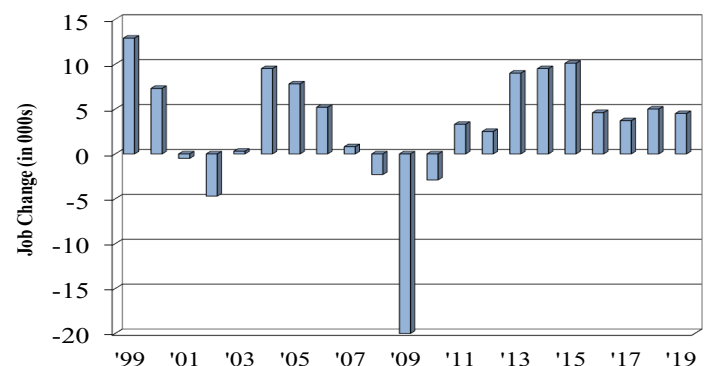
All Urban Consumers

	Percent Change to Oct. 2020 from:		
	Oct. 2019	Aug. 2020	Sept. 2020
US City Average	1.2	0.2	0.0
Phila.-Camden-Wilm.*	0.8	0.0	NA

* Data are published on a bi-monthly basis.

Delaware Annual Net Job Change

Annual Average 1999—2019



Office of Occupational and Labor Market Information

For data questions, contact Tom Dougherty (302) 761-8062

<https://lmi.delawareworks.com>