

# TOWN MANAGER'S WEEKLY REPORT

---



## UPCOMING MEETINGS & EVENTS ...

- ✓ **Planning Commission:** Wednesday, October 21, 6:00 PM, Town Hall
  1. 113 Georgetown Properties (PAM Rehabilitation Hospital) – Preliminary Site Plan
- ✓ **Town Council Meeting:** Wednesday, October 28 – To Be Determined
- ✓ **Town Offices Closed:** Tuesday, November 3 in observation of Election Day
- ✓ **Sussex County Association of Towns:** Wednesday, November 4, 6:00 PM, Hosted by Town of Ocean View
- ✓ **Town Offices Closed:** Thursday, November 5, in observation of Return Day
- ✓ **Sussex County Association of Towns Steering Committee:** Friday, November 6, 9:00 AM, First State Community Action Agency
- ✓ **Delaware League of Local Governments:** Cancelled until further notice

## UPDATES FROM DEPARTMENTS ...

### **Finance**

- As of October 16, the Town has collected:
  - \$1,631,602 (98%) of the annual property tax billing (\$1,674,899)
  - \$325,285 (30%) of the October quarterly utility billing (\$1,082,646)
    - ✓ Collections still in alignment with prior quarters
- Processed Accounts Payable, Accounts Receivable, and Payroll
- “Water Asset Management Project” plan update phone conference call with KCI (Laura Givens)
- Provided Tax and Utility Information for property settlements and stamped deeds

### **Wastewater**

- Lagoon depths: Large Lagoon is 7.50 feet and Small Lagoon is 6.50 feet
- Jetted and videoed sewer lateral on East Market street, found a crack in the pipe
- Jetted sewer main on South Railroad near where Teal is working, and removed several roots
- Responded to sewer issue on Sweet Gum Court – checked sewer mains and lateral and everything on Town side was good

# TOWN MANAGER'S WEEKLY REPORT

---



## **Police**

- Weekly and Year to Date crime statistics (selected crimes) updated (copy attached)
- Departmental Press Releases issued as warranted

## **Planning**

- Project Updates:
  - 507 North Bedford Street – Lot line adjustment approved on October 14
  - 327 North Race Street – Resubmittal of site plan on October 14
  - 229 East Market Street – Barbershop tenant fit-out permit submitted on October 14
  - 5 & 7 Georgetown Plaza – Produce Depot tenant fit-out application submitted October 14
  - 302 North Front Street – Lot subdivision (3) submitted on October 15

## **Construction Coordinator**

- Georgetown East Gateway project
  - Inspection of 10" water main installation
- Certificate of Occupancy (CO) Inspections
  - Sussex Academy Arts and Sciences – Science Lab
- Miss Utility Locate Summary (copy attached)

## **Public Works**

- Confirmed Arbor Tree Care for the last week of October
- Serviced street lights along East Market Street
- Grass cutting and street sweeping ongoing
- Cleaning of catch basins continued

## TOWN MANAGER'S UPDATE ...

- Addressed resident concern over utility billing and issuance of refund (Gene Dvornick, Laura Givens)
- Participated in a Zoom Meeting on the DelDOT Transportation Alternatives Program (TAP) and possibilities for North Race Street improvements (Gene Dvornick, Laura Givens)

# TOWN MANAGER'S WEEKLY REPORT

---



- Met with local developer to discuss project status and ongoing issues with DelDOT (Gene Dvornick, Bill West)
- Responded to request for zoning information related to Registered Compassion Centers
- Researched alleged code violations and follow up for compliance on a specific property (Gene Dvornick, Mike Picarello)
- Issued Press Release for 2020 Trick-or-Treat and responded to local media inquiries regarding same
- Participated in ClearGov webinar (Gene Dvornick, Laura Givens, Olga Holm) – offerings included:
  - ✓ Budget Builder
  - ✓ Budget Book
  - ✓ Insights
- Participated in CodeRED webinar – Community Notification Solution (emergency, non-emergency, announcements) (Kristin Dabrowski, Gene Dvornick, Laura Givens, Olga Holm, Captain Holm)
- Met with representative of the Georgetown Little League to answer questions regarding the permanent easement for the Georgetown to Lewes Trail (Gene Dvornick, Laura Givens, Bill West)
- Built Excel spreadsheet for Water Department to track daily chemical readings (pH, Chlorine, Fluoride)
- Responded to local print media request for information on the status of the discolored water situation
- Prepared Letter of Reference for CannTech Research, Inc.'s Application for Registered Compassion Center
- Attended Splash Laundromat Ribbon Cutting and Downtown Development District, State Rebate Presentation (Gene Dvornick, Chief Hughes, Office Melvin, Bill West)
- Received submission materials for the planned construction and upgrades at the Georgetown Transit Hub
- Monthly Labor Review – September 2020 received (copy attached)
- Followed up on several code enforcement issues



# TOWN MANAGER'S WEEKLY REPORT

---



# TOWN MANAGER'S WEEKLY REPORT

---

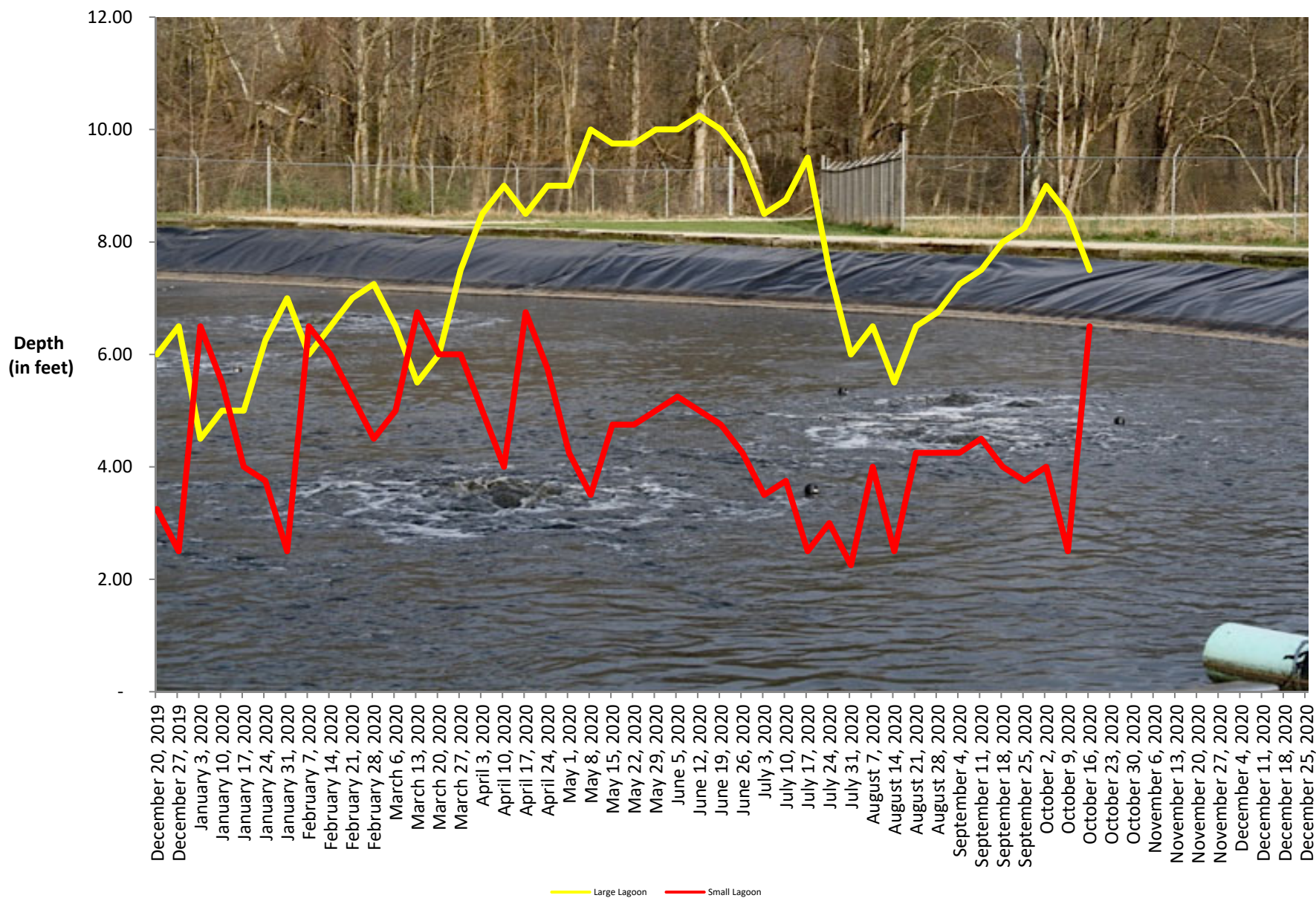


***THIS REPORT AND ANY ATTACHMENTS ARE ONLY BEING SENT  
ELECTRONICALLY UNLESS OTHERWISE REQUESTED***

*In an effort to better inform Council, employees and the public about current Town activities and issues, the Town Manager issues the Town Manager's Weekly Report with highlights from department activities for the current week. The report is published online and distributed every Friday. If you have comments, questions or suggestions regarding the Town Manager's Weekly Report, please contact Town Manager.*

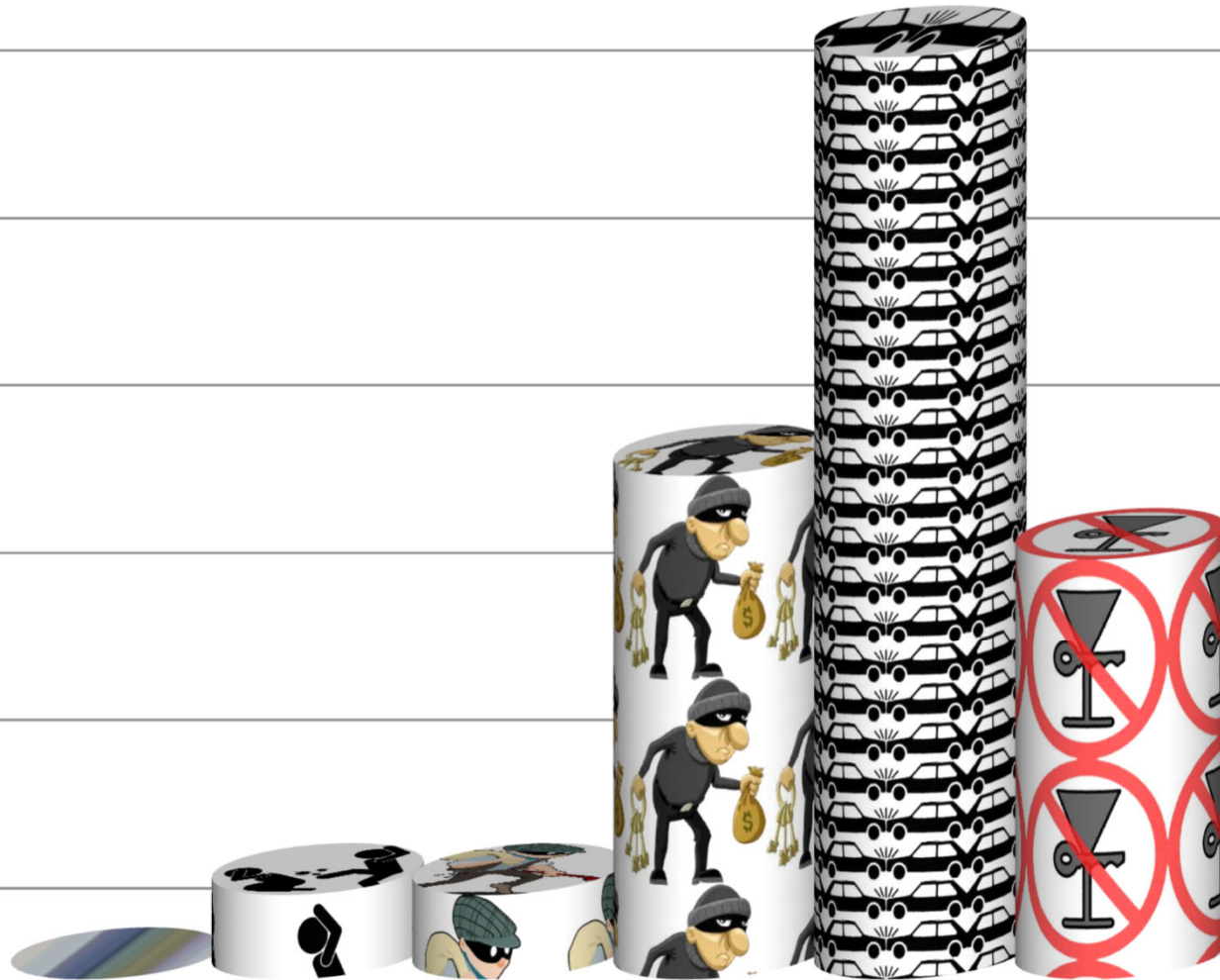


## WWTF Lagoon Depths



October 14, 2020

12  
10  
8  
6  
4  
2  
0

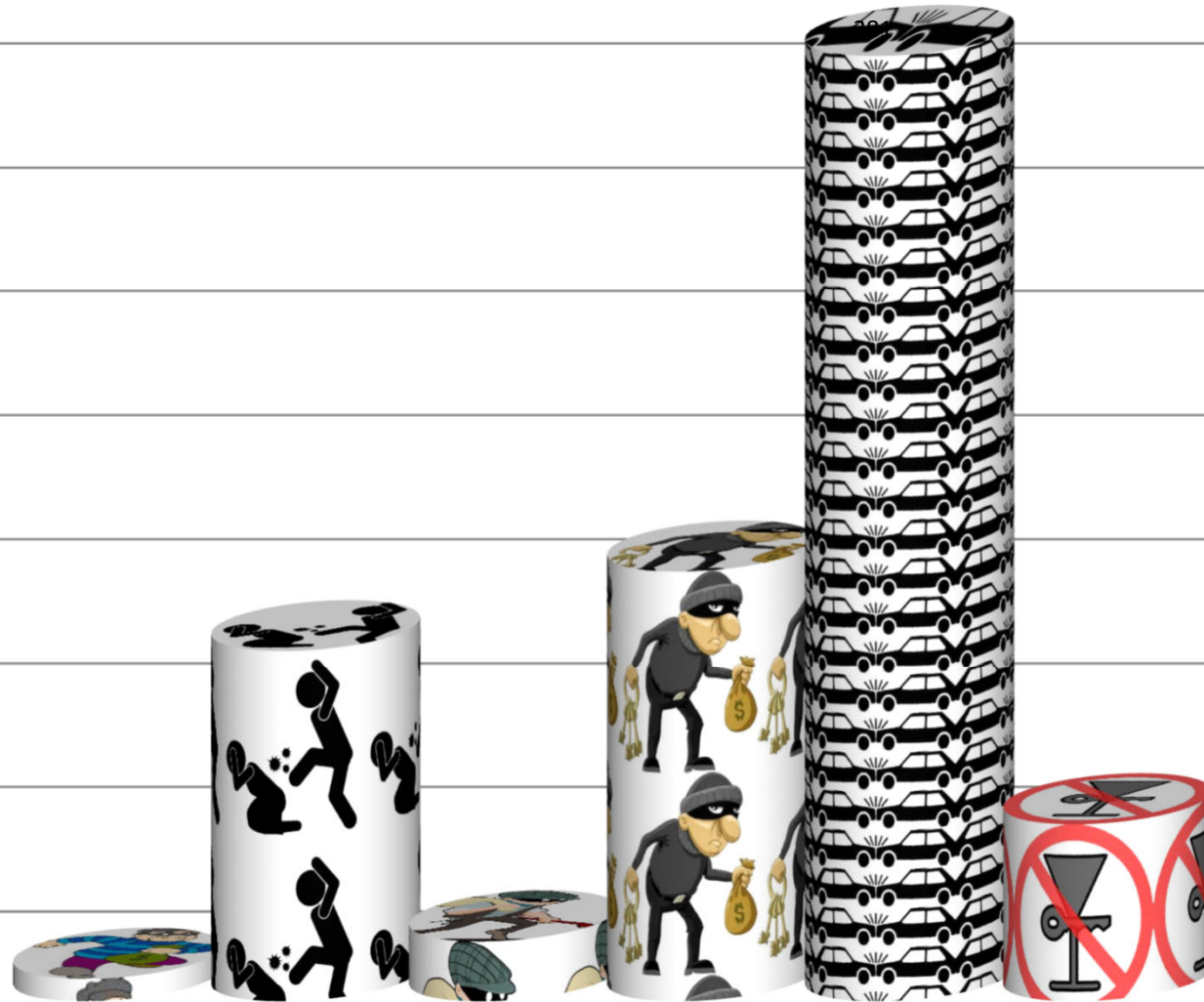


Weekly

\*Robbery \*Assault \*Buglary \*Thefts \*Collision \*DUI

October 14, 2020

400  
350  
300  
250  
200  
150  
100  
50  
0

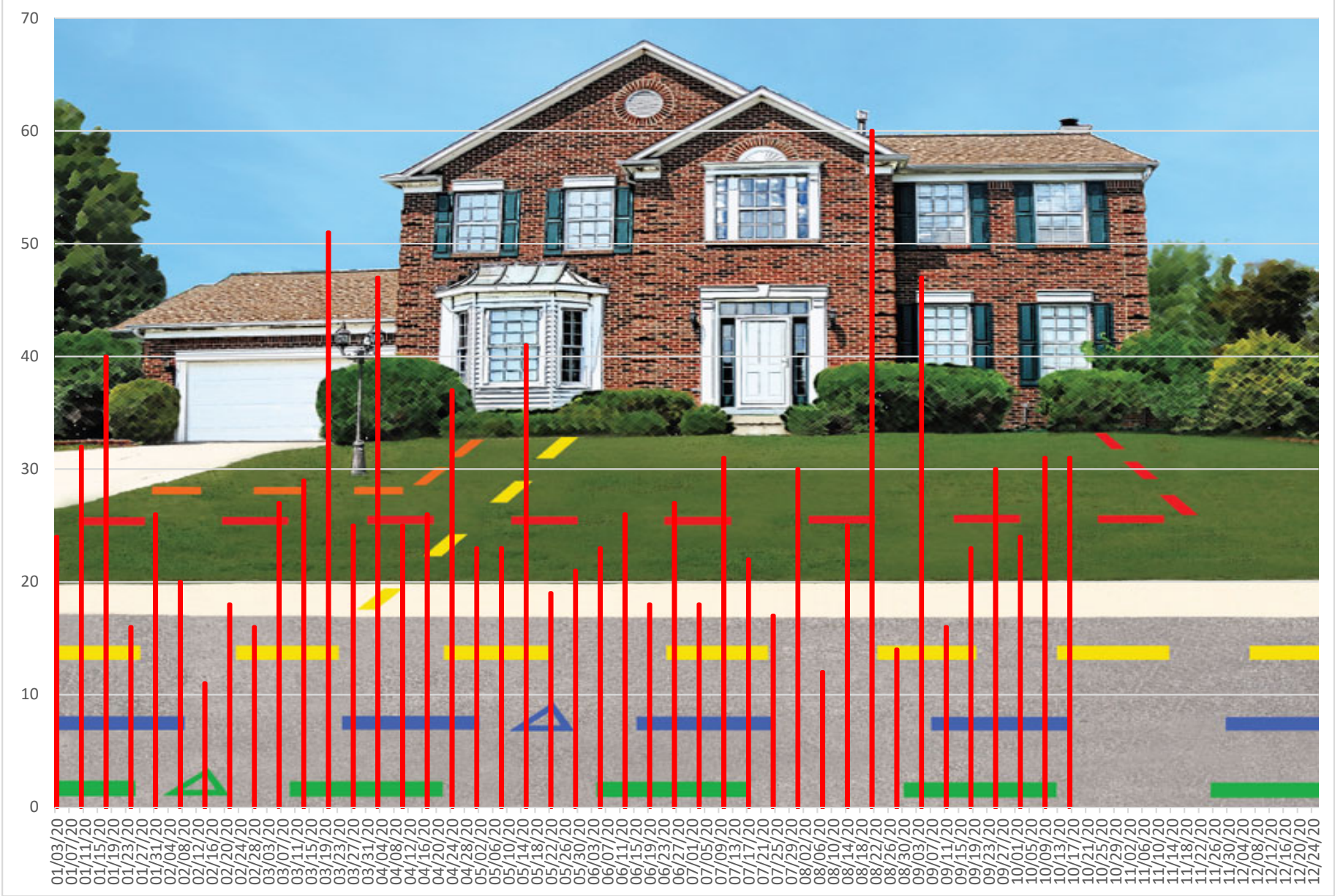


Year to Date

\*Robbery \*Assault \*Buglary \*Thefts \*Collision \*DUI

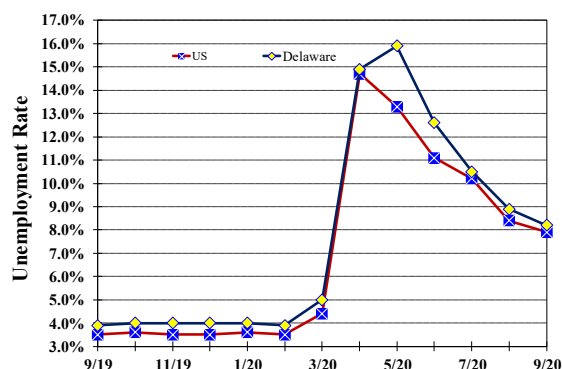


Miss Utility Locate Tickets



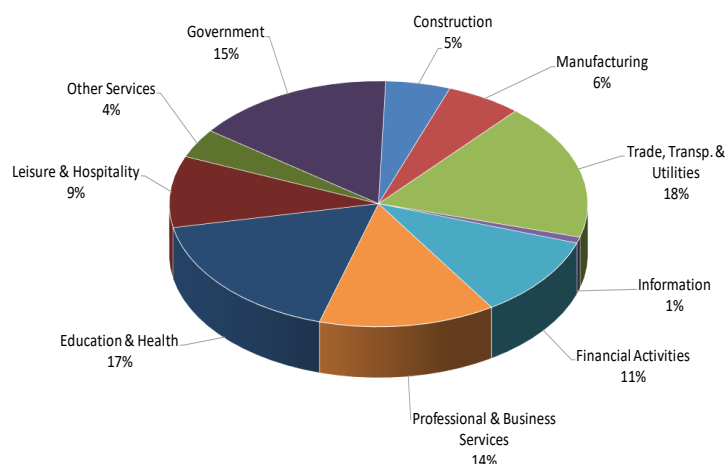
### Unemployment Rate

*Delaware and US*  
September 2019 - September 2020



### Percent Distribution of Delaware Nonfarm Employment

September 2020



### Delaware Civilian Labor Force

Delaware Residents

	Sept. 2020	Aug. 2020	Sept. 2019
Civilian Labor Force	495,300	500,900	488,700
Employed	454,900	456,200	469,400
Unemployed	40,400	44,700	19,300
Unemployment Rate %	8.2	8.9	3.9
US Unemployment Rate %	7.9	8.4	3.5

Source: Delaware Dept. of Labor in cooperation with the US Dept. of Labor, Bureau of Labor Statistics.

### Area Unemployment Rates (%)

	Sept. 2020	Aug. 2020	Sept. 2019
<b>New Castle County</b>	8.5	9.5	4.0
Wilmington	14.0	15.0	5.7
Newark	6.2	6.9	4.3
<b>Kent County</b>	8.6	9.8	4.3
Dover	12.1	13.4	5.7
<b>Sussex County</b>	6.8	7.6	3.5

Note: Area rates are not seasonally adjusted.

Source: Delaware Dept. of Labor in cooperation with the US Dept. of Labor, Bureau of Labor Statistics.

### Hours & Earnings

*All Employee (Total Private)*

	Sept. 2020	Aug. 2020	Sept. 2019
<b>Weekly Earnings</b>	\$923.72	\$945.62	\$923.33
<b>Weekly Hours</b>	32.4	32.8	33.6
<b>Hourly Earnings</b>	\$28.51	\$28.83	\$27.48

## Delaware Labor Force Trends

Delaware's seasonally adjusted unemployment rate in September 2020 was 8.2%, down from 8.9% in August 2020. There were 40,400 unemployed Delawareans in September 2020 compared to 19,300 in September 2019. The US unemployment rate was 7.9% in September 2020, down from 8.4% in August 2020. In September 2019, the US unemployment rate was 3.5%, while Delaware's rate was 3.9%.

In September 2020, seasonally adjusted nonfarm employment was 428,800 up from 426,700 in August 2020. Since September 2019, Delaware's total nonfarm jobs have decreased by a net loss of 37,500, a decline of 8.0%. Nationally, jobs during that period declined 6.4%.

## Delaware Nonfarm Employment

*Jobs at Delaware Locations*  
Seasonally Adjusted (in 000s)

INDUSTRY GROUP	Sept. 2020	Aug. 2020	Over the Month Change	Over the Year Change†
TOTAL NONAG. EMP.	428.8	426.7	2.1	-37.5
CONSTRUCTION	21.4	21.3	0.1	-1.5
MANUFACTURING	25.0	25.0	0.0	-2.2
Durable Goods	8.7	8.7	0.0	-1.1
Nondurable Goods	16.3	16.3	0.0	-1.1
TRADE, TRANSP., & UTIL.	77.3	76.6	0.7	-3.0
Wholesale Trade	10.0	9.9	0.1	-1.0
Retail Trade	51.9	50.2	1.7	0.0
Transp. & Utilities	15.4	16.5	-1.1	-2.0
INFORMATION *	3.4	3.4	0.0	-0.5
FINANCIAL ACTIVITIES	46.0	46.2	-0.2	-1.5
PROF. & BUS. SERVICES	58.4	58.4	0.0	-5.7
EDUCATION & HEALTH	74.3	74.3	0.0	-6.8
LEISURE & HOSPITALITY	40.3	39.2	1.1	-13.0
OTHER SERVICES	16.5	16.2	0.3	-2.2
GOVERNMENT	66.2	66.1	0.1	-1.1
Federal Government	6.6	6.6	0.0	0.8
State Government	32.0	32.3	-0.3	-1.4
Local Government	27.6	27.2	0.4	-0.5

\* Industries are not seasonally adjusted.

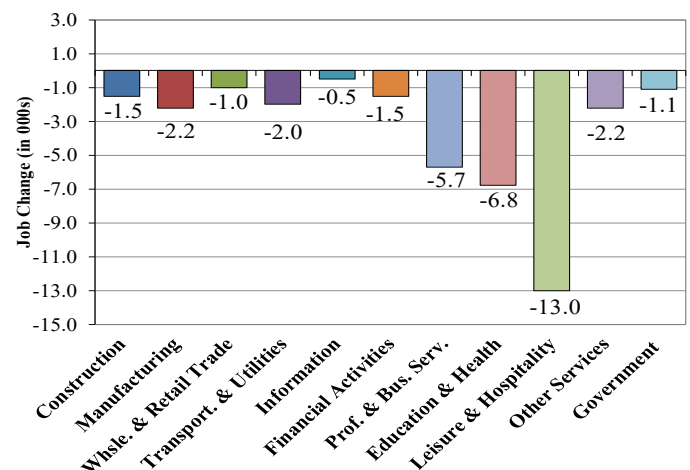
† Annual changes are not seasonally adjusted.

Details may not add up due to rounding and seasonal adjustment.

Source: US Department of Labor, Bureau of Labor Statistics.

## Delaware Over-the-Year Job Change

September 2019—September 2020



## Consumer Price Index

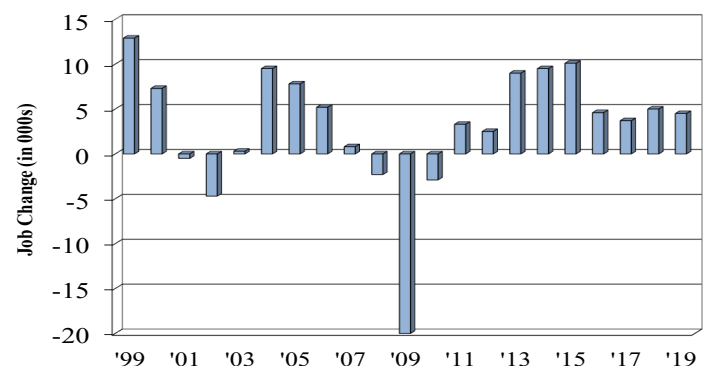
All Urban Consumers

	Percent Change to Sept. 2020 from:		
	Sept. 2019	July 2020	Aug. 2020
US City Average	1.4	0.5	0.1
Phila.-Camden-Wilm.*	NA	NA	NA

\* Data are published on a bi-monthly basis.

## Delaware Annual Net Job Change

Annual Average 1999—2019



Office of Occupational and Labor Market Information

For data questions, contact Tom Dougherty (302) 761-8062

<https://lmi.delawareworks.com>