

TOWN MANAGER'S WEEKLY REPORT



UPCOMING MEETINGS & EVENTS ...

- ✓ **Town Council Meeting:** Wednesday, September 23, Regular Meeting – 2:00 PM, Electronic Meeting
- ✓ **Sussex County Association of Towns:** Wednesday, October 7, 6:00 PM, hosted by Seaford (Candidates Night)
- ✓ **Delaware League of Local Governments:** Cancelled until further notice

UPDATES FROM DEPARTMENTS ...

Finance

- As of September 17, the Town has collected:
 - \$1,624,431 (97%) of the annual property tax billing (\$1,674,899)
 - \$928,087 (96%) of the July quarterly utility billing (\$971,701)
 - ✓ Collections still in alignment with prior quarters
- Processed Accounts Payable, Accounts Receivable, and Payroll
- Provided Tax and Utility Information to settlement lawyers and processed deed transfers
- Updated “Sewer Asset Management Project” spreadsheet and submitted to KCI (Laura Givens, Eric Rust)
- Responded to a confirmation letter from Belfint, Lyons & Shuman, PA (State of DE Audit) regarding State Revolving Loan Funds (Olga Holm)
- Attended the Governor’s phone call with all Towns/Mayors (Laura Givens, Bill West)

Wastewater

- Lagoon depths: Large Lagoon is 8.00 feet and Small Lagoon is 4.00 feet
- Completed grass cutting and trim at the pump stations
- Replaced a broken support cable on air chain # 1 in the Biolac aeration basin
- Pulled out Pump #2 at Cinderberry pump station to have it sent out for repair and installed one of the spare pumps back in place

Police

- Weekly and Year to Date crime statistics (selected crimes) updated (copy attached)
- Departmental Press Releases issued as warranted

TOWN MANAGER'S WEEKLY REPORT



Public Works

- Grass cutting and street sweeping ongoing
- Cleaned up Parsons Lane property (branches, limbs, debris)
- Water meter rereads were completed

Construction Coordinator

- North Race Street Improvements
 - Locate all utilities from Pepper Street to Douglas Street
- Georgetown East Gateway Project
 - Reviewed source of supply and material submittals
 - Onsite pre-construction meeting
- Miss Utility Locate Summary (copy attached)

Planning

- Planning Commission:
 - Shipbuilders Village (Conceptual Review) – *Applicant may proceed to Preliminary submittal*
- 113 Georgetown Properties LLC (PAM Medical) – Submitted lot line adjustment and Category I site plan on September 14
- Isaacs Farm – Comments received on final site plan and to applicant on September 16
- 507 North Bedford Street – Submitted lot line adjustment on September 14

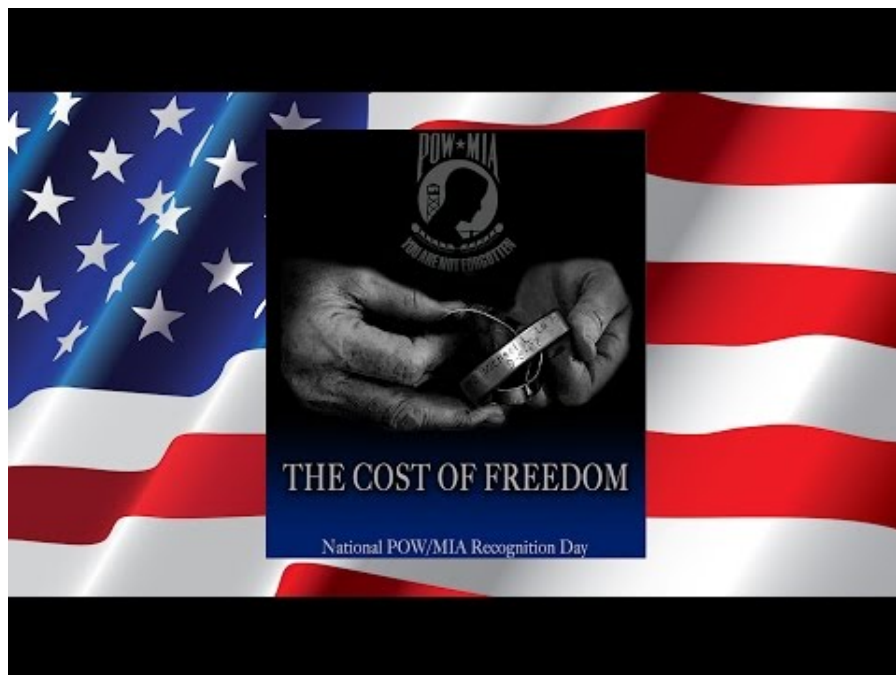
TOWN MANAGER'S UPDATE ...

- Worked with Planning Staff and Town Solicitor regarding proper handling of Boundary Surveys and the purpose of the Town Stamp (Gene Dvornick, Laura Givens, Jocelyn Godwin)
- DNREC consultant has begun Facility Evaluation at Former Georgetown Dump Site
- Researched hotel room conversion with respect to Town Code
- Met with local investor to discuss "Village Concept", Cottage homes, vacant lands, and opportunities in the Downtown Development District
- Georgetown Main Street Assessment discussion held with Division of Small Business, DE on Main representative (reinforced Town's desire to remain as a Main Street Affiliate)

TOWN MANAGER'S WEEKLY REPORT



- Participated in Georgetown Project Update with representatives of KCI: Comprehensive Plan, Asset Management – Water, Asset Management – Wastewater, and On-call services – in light of staffing changes at KCI (Gene Dvornick, Laura Givens, Jocelyn Godwin)
- Worked with Delaware HELP Initiative to schedule an informational session for the October 14 Town Council Meeting
- Followed up with DART on concern over bus travel routes
- Researched property deeds and surveys in preparation for meeting with local attorney
- Received notification that the Women's Suffrage Centennial Commission has postponed the installation and dedication of the historical marker until 2021
- Participated in "Downtown Development Districts for Elected Leaders" (Gene Dvornick, Jocelyn Godwin, Rebecca Johnson-Dennis, Bill West) – Topics covered:
 - ✓ Background and overview of the program
 - ✓ Synergistic impact – Local, County, State, and Federal
 - ✓ District Resources
 - ✓ Opportunities for marketing
- Responded to several FOIA requests
- Met with local attorney to review property and deed history and outlined steps for minor subdivision (Gene Dvornick, Laura Givens, Jocelyn Godwin, Bill West)
- Responded to hotel room conversion question from local business owner
- Monthly Labor Review – August 2020 received (copy attached)
- Followed up on several code enforcement issues



TOWN MANAGER'S WEEKLY REPORT



**PROTECT YOURSELF.
AND THOSE YOU LOVE.**

**DOWNLOAD DELAWARE'S
OFFICIAL APP.**



Don't miss out - Everyone Counts!

TOWN MANAGER'S WEEKLY REPORT



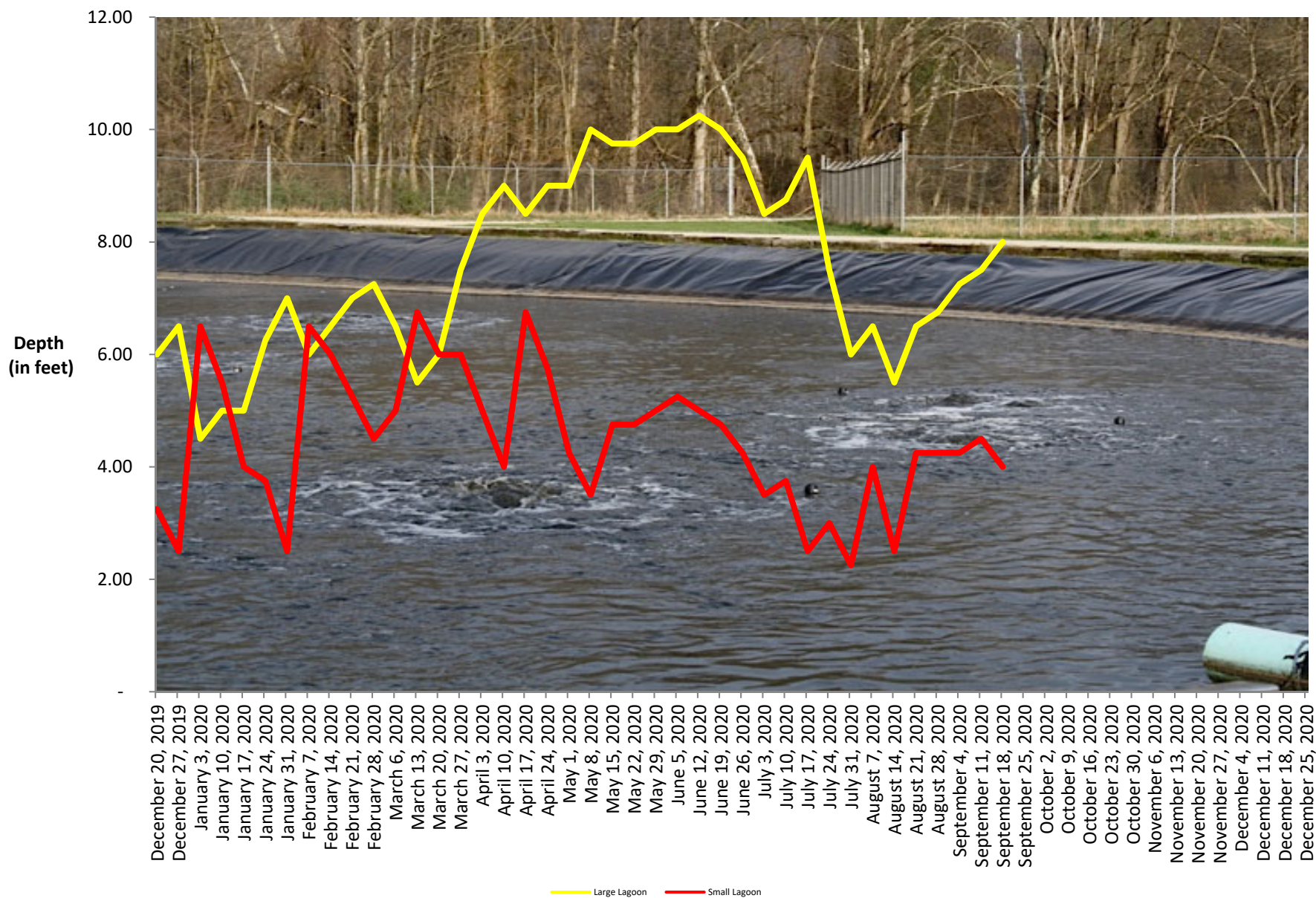
TOWN MANAGER'S WEEKLY REPORT



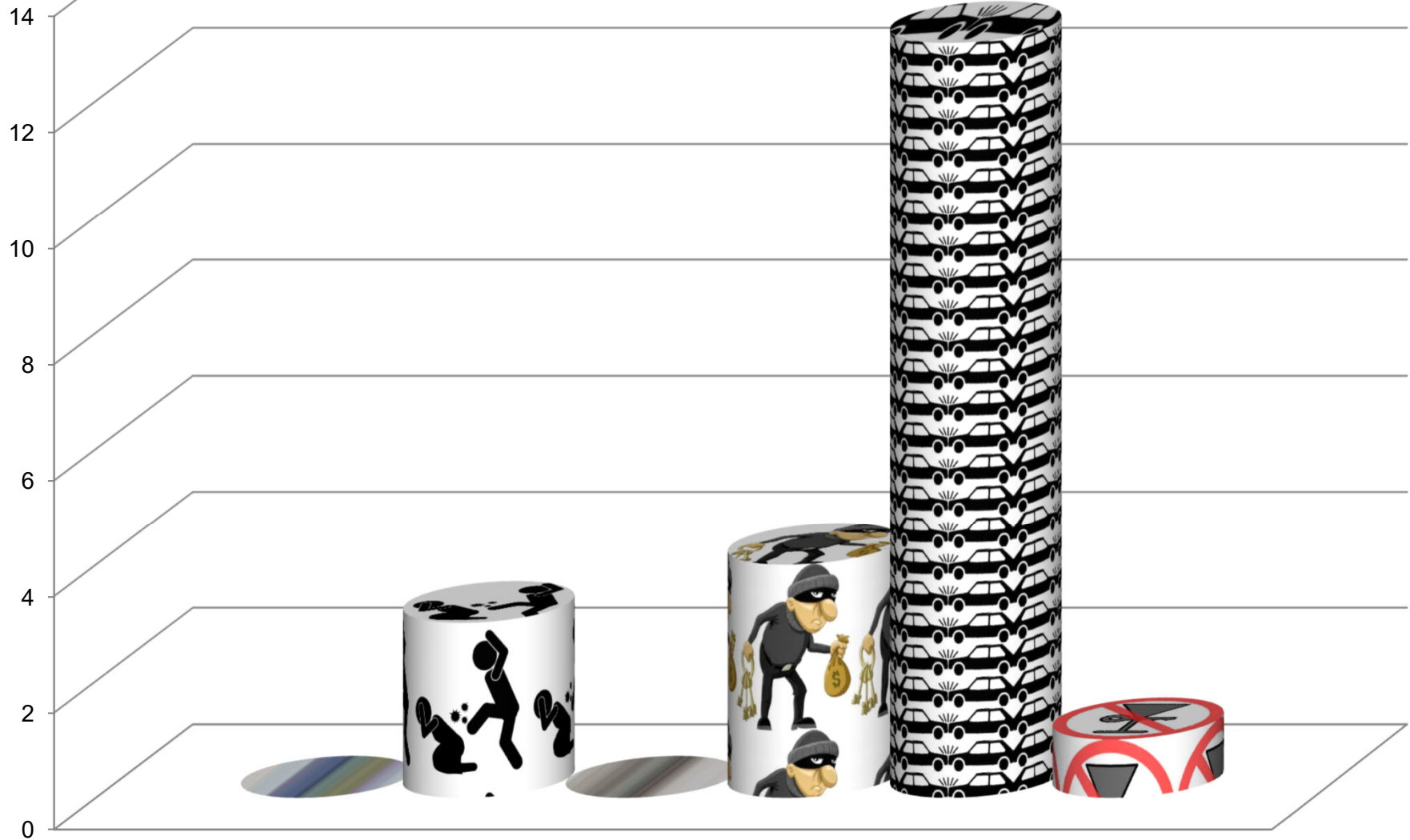
***THIS REPORT AND ANY ATTACHMENTS ARE ONLY BEING SENT
ELECTRONICALLY UNLESS OTHERWISE REQUESTED***

In an effort to better inform Council, employees and the public about current Town activities and issues, the Town Manager issues the Town Manager's Weekly Report with highlights from department activities for the current week. The report is published online and distributed every Friday. If you have comments, questions or suggestions regarding the Town Manager's Weekly Report, please contact Town Manager.

WWTF Lagoon Depths



September 16, 2020

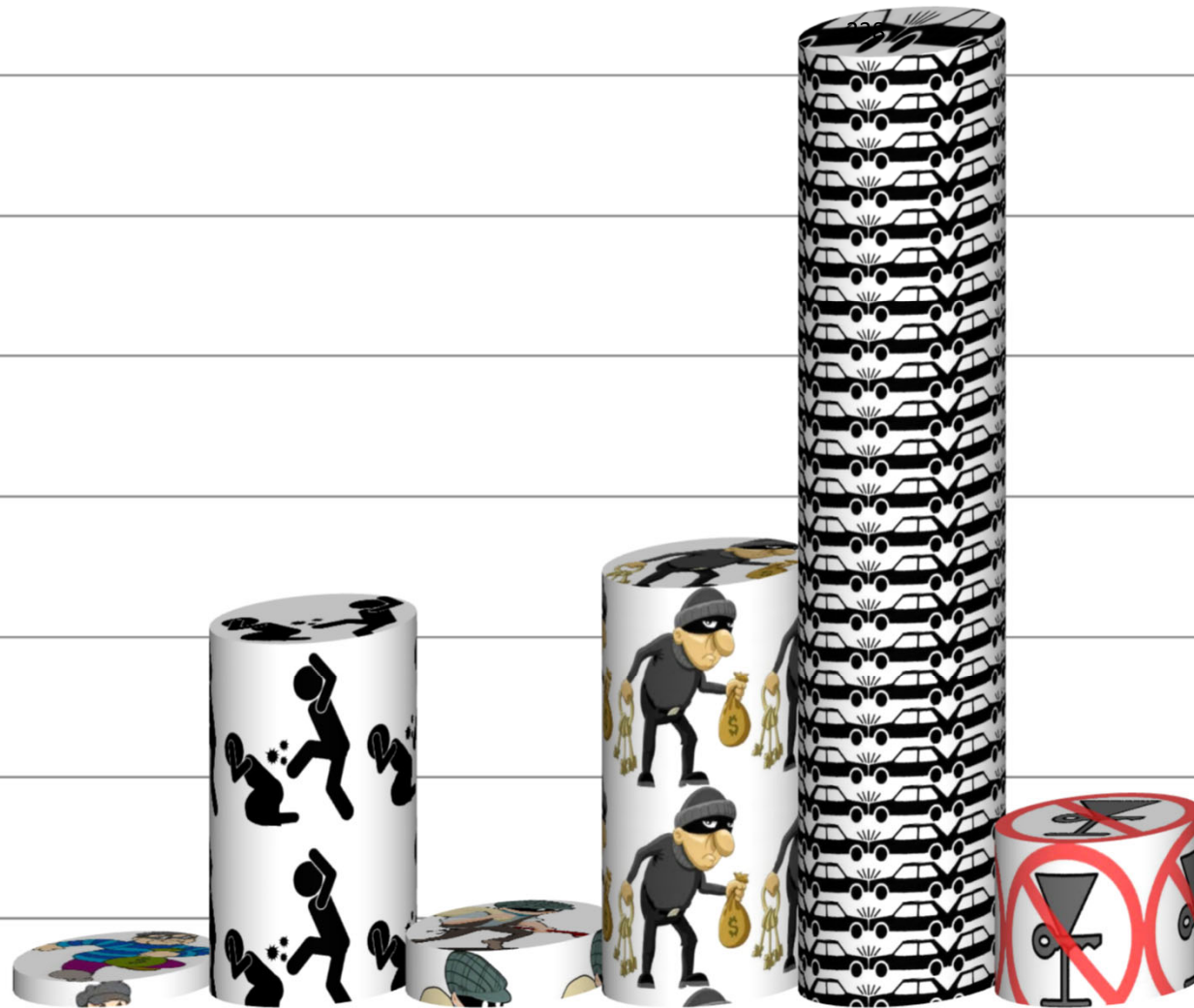


Weekly

*Robbery *Assault *Buglary *Thefts *Collision *DUI

September 16, 2020

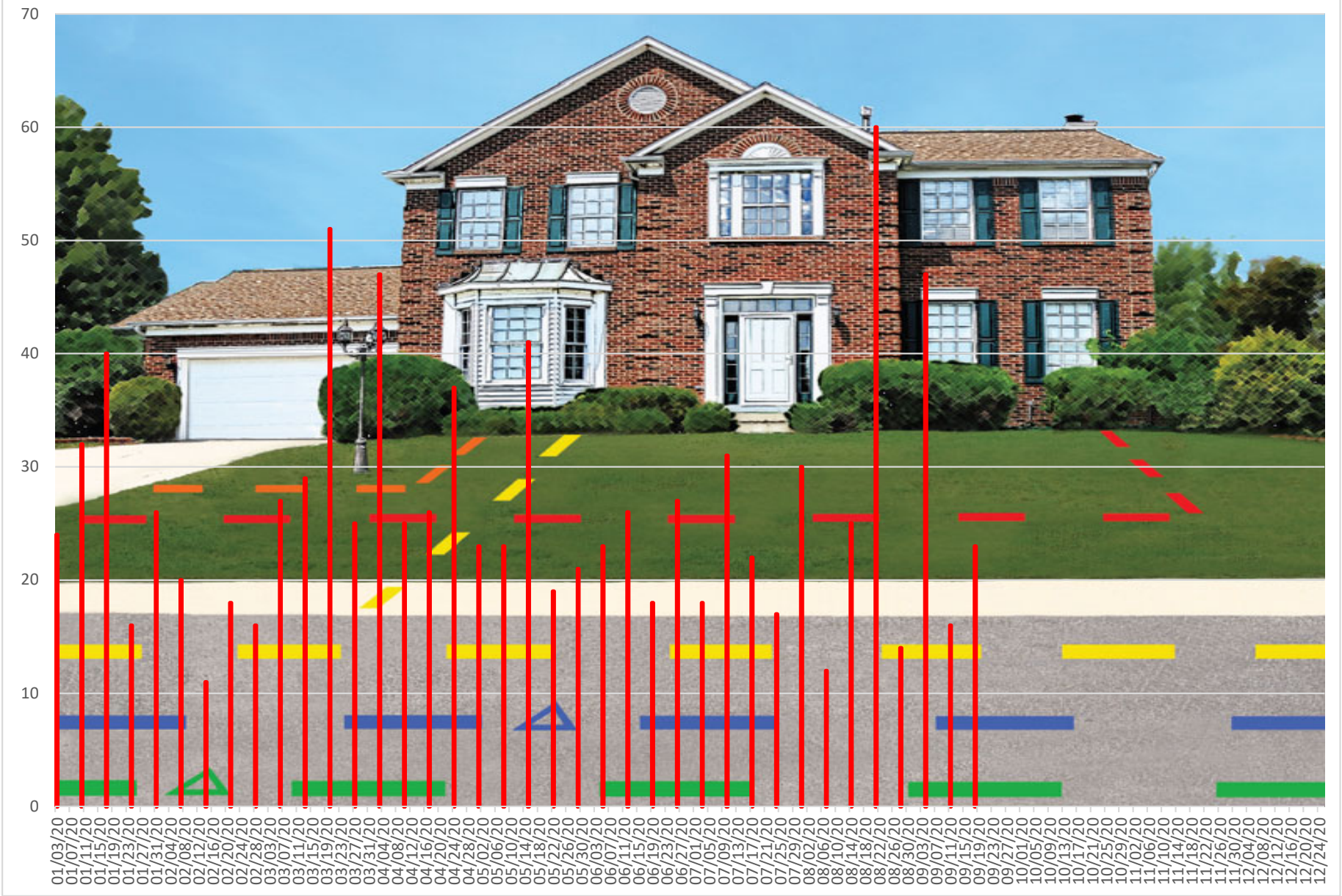
350
300
250
200
150
100
50
0



Year to Date

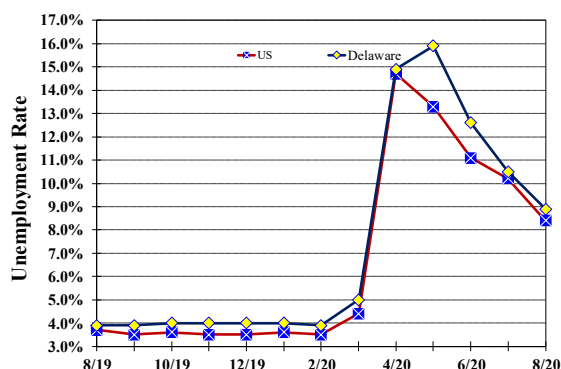
*Robbery *Assault *Buglary *Thefts *Collision *DUI

Miss Utility Locate Tickets



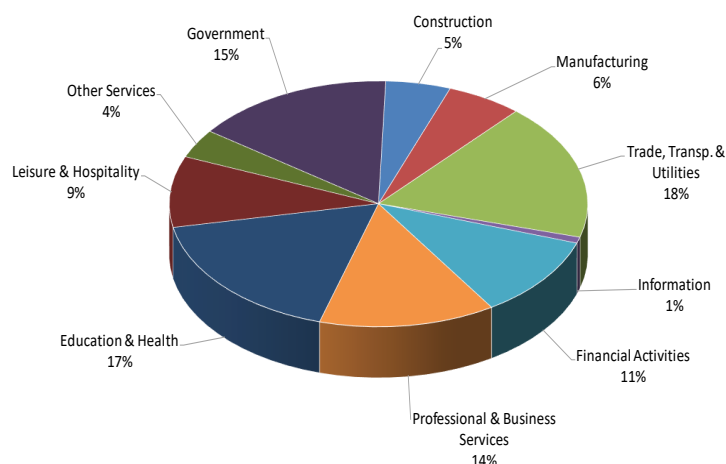
Unemployment Rate

Delaware and US
August 2019 - August 2020



Percent Distribution of Delaware Nonfarm Employment

August 2020



Delaware Civilian Labor Force

Delaware Residents

	Aug. 2020	July 2020	Aug. 2019
Civilian Labor Force	500,800	505,600	488,200
Employed	456,300	452,600	469,200
Unemployed	44,500	53,000	19,000
Unemployment Rate %	8.9	10.5	3.9
US Unemployment Rate %	8.4	10.2	3.7

Source: Delaware Dept. of Labor in cooperation with the US Dept. of Labor, Bureau of Labor Statistics.

Area Unemployment Rates (%)

	Aug. 2020	July 2020	Aug. 2019
New Castle County	9.4	11.0	4.2
Wilmington	14.9	16.6	6.1
Newark	6.9	8.8	4.2
Kent County	9.8	11.6	4.9
Dover	13.3	15.7	6.3
Sussex County	7.6	9.1	3.4

Note: Area rates are not seasonally adjusted.

Source: Delaware Dept. of Labor in cooperation with the US Dept. of Labor, Bureau of Labor Statistics.

Hours & Earnings

All Employee (Total Private)

	Aug. 2020	July 2020	Aug. 2019
Weekly Earnings	\$948.84	\$916.39	\$886.41
Weekly Hours	32.9	32.6	33.5
Hourly Earnings	\$28.84	\$28.11	\$26.46

Delaware Labor Force Trends

Delaware's seasonally adjusted unemployment rate in August 2020 was 8.9%, down from 10.5% in July 2020. There were 44,500 unemployed Delawareans in August 2020 compared to 19,000 in August 2019. The US unemployment rate was 8.4% in August 2020, down from 10.2% in July 2020. In August 2019, the US unemployment rate was 3.7%, while Delaware's rate was 3.9%.

In August 2020, seasonally adjusted nonfarm employment was 426,800, up from 421,700 in July 2020. Since August 2019, Delaware's total nonfarm jobs have decreased by a net loss of 41,300, a decline of 8.8%. Nationally, jobs during that period declined 7.0%.

Delaware Nonfarm Employment

Jobs at Delaware Locations
Seasonally Adjusted (in 000s)

INDUSTRY GROUP	Aug. 2020	July 2020	Over the Month Change	Over the Year Change†
TOTAL NONAG. EMP.	426.8	421.7	5.1	-41.3
CONSTRUCTION	21.4	21.3	0.1	-1.3
MANUFACTURING	25.0	24.5	0.5	-2.3
Durable Goods	8.8	8.7	0.1	-1.0
Nondurable Goods	16.2	15.8	0.4	-1.3
TRADE, TRANSP., & UTIL.	76.7	74.2	2.5	-3.8
Wholesale Trade	10.0	9.8	0.2	-1.2
Retail Trade	50.2	48.5	1.7	-1.6
Transp. & Utilities	16.5	15.9	0.6	-1.0
INFORMATION *	3.4	3.5	-0.1	-0.5
FINANCIAL ACTIVITIES	45.8	46.2	-0.4	-1.8
PROF. & BUS. SERVICES	58.1	58.2	-0.1	-6.9
EDUCATION & HEALTH	74.1	73.5	0.6	-7.1
LEISURE & HOSPITALITY	39.9	39.2	0.7	-13.9
OTHER SERVICES	16.2	15.9	0.3	-2.6
GOVERNMENT	66.2	65.2	1.0	-1.1
Federal Government	6.6	5.9	0.7	0.8
State Government	32.5	32.4	0.1	-0.8
Local Government	27.1	26.9	0.2	-1.1

* Industries are not seasonally adjusted.

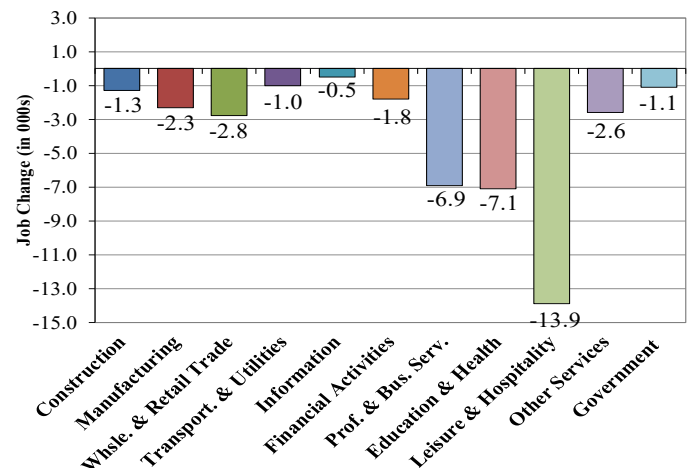
† Annual changes are not seasonally adjusted.

Details may not add up due to rounding and seasonal adjustment.

Source: US Department of Labor, Bureau of Labor Statistics.

Delaware Over-the-Year Job Change

August 2019—August 2020



Consumer Price Index

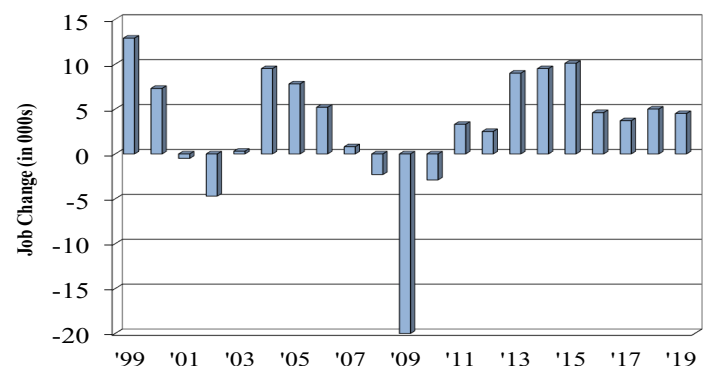
All Urban Consumers

	Percent Change to Aug. 2020 from:		
	Aug. 2019	June 2020	July 2020
US City Average	1.3	0.8	0.3
Phila.-Camden-Wilm.*	0.4	0.8	NA

* Data are published on a bi-monthly basis.

Delaware Annual Net Job Change

Annual Average 1999—2019



Office of Occupational and Labor Market Information

For data questions, contact Tom Dougherty (302) 761-8062

<https://lmi.delawareworks.com>